

# Durbin Creek Ranch



Cattle for Commercial Cowmen  
From Commercial Cowmen



## The Agar Family

3292 Grass Creek Rd • Thermopolis, WY 82443 • (307) 921-8825 • [www.durbincreekranch.com](http://www.durbincreekranch.com)

12<sup>th</sup>

# Annual Bull Sale

Wednesday, February 7, 2024

Worland, Wyoming

100 2-Year-Old, PAP Tested, Range Ready Hereford Bulls

300 F1 Baldy Heifer Calves

2 Ranch/Performance Horses

# Durbin Creek Ranch Annual Bull Sale

Wednesday, February 7, 2023

Big Horn Basin Livestock

1:00 pm mst

1310 Lane 12, Worland WY (307) 347-9201

## Sales Staff

### Auctioneer

Joe Goggins (406) 861-5664

**American Hereford Association**

Kevin Murnin (406) 863-4638

**Western Livestock Journal**

Devin Murnin (406) 696-1502

**Wyoming Livestock Roundup**

Curt Cox (307) 630-4604

**Western Ag Reporter**

Dwayne Diets (406) 672-8500

Alan Sears (970) 396-7521

**Hereford America**

Marc & Jill Hotchkiss (605) 866-4495

**Big Horn Basin Livestock**

Danny Vigil (307) 388-0781

**Special Assignment**

Drew Neilsen (307) 277-4417

## Sale Day Numbers

Bruce's Cell: (307) 921-3021

Wyatt's Cell: (307) 921-8825

Jake's Cell: (541) 519-5366

Neighbors and friends,

Welcome back to the Durbin Creek program and thank you for your continued interest. As a family we feel incredibly blessed to make a living off the land and working side by side. Without you, our customers, it would not be possible. Our goal at DCR is to produce cattle that thrive in the adverse conditions of the Inter-Mountain Region with few extra inputs. It is always the optimums versus the maximums that keep us in business. In the last 10 months we have seen calf prices that are exciting to say the least. However, every input that the cowherd takes has significantly increased as well. Balance is the key!

Over the years, we have not only retained ownership on our home raised cattle, but also purchased many of our bull customer's calves. This has allowed us the opportunity to collect feedlot and carcass data on large groups of DCR bred calves; and it is reassuring to see the numbers. The cattle harvested in 2022 gained well over 4 lbs. a day with finish weights over 1,600 lbs. Couple that with choice and prime carcasses that hit the high 90 percentile, we feel that we are moving in the right direction with our third phase traits. For the first time we are finishing a large set of DCR bred cattle here at Washakie Feeders. The process has been a learning experience. I can guarantee you no other operation works harder to give you more marketing options, or to put you closer to value added programs. Visit with one of the crew about how we can help you, whether it is marketing calves, developing heifers or finishing fats.

This is an extremely deep and powerful set of bulls from top to bottom that excel in the traits important to the Inter-Mountain cattleman. They should sire calves that generate dollars from birth until they hit the rail. This is your opportunity to get into the largest set of PAP tested 2 year old bulls in the breed, out of a cowherd that works every day at higher elevations and in tough conditions. It's not a gimmick to us; it's a way of life!

The F1 baldy females are once again a product of our customer's programs and are sired exclusively by DCR bulls. Producers that purchase them continue to be impressed with the mother cows that they make. If you are considering using Hereford bulls, I challenge you to come take a look at them. Once again thank you and we would love to see you at the sale!

In Christ Love,  
The Agar Family

We would love it if you  
would join us

Tuesday, February 6 for our  
Pre-Sale Dinner at Green  
Hills Restaurant & Bar  
located at 1455 Airport Rd.  
at 6:00 pm

Sale Will Be Held At  
Big Horn Basin Livestock Sale  
Barn

- From Big Horn Ave., turn South onto 5th Street
- Go two blocks and turn West (right) onto Culbertson Ave.
- Then S.W. (left) onto Railroad Ave.
- Go 7 blocks and turn West (right) onto a dirt road that crosses the railroad tracks, directly across from Washakie Ave.

## Hotel Information

Ask for the "Durbin Creek Bull Sale Rate"

Days Inn

500N 10<sup>th</sup> St.

Worland, WY

(307) 347-4251

Or

Comfort Inn

100N Rd 11

Worland, WY

(307) 347-9898

**Bulls will be  
available for viewing  
all day Tuesday and  
Wednesday.**

For questions about the bulls,  
please contact Wyatt Agar  
(307) 921-8825 or email at  
[durbincreekranch@yahoo.com](mailto:durbincreekranch@yahoo.com)



## What is PAP

PAP (Brisket Disease) in cattle is physiologically known as bovine pulmonary hypertension and is problematic in calves raised at altitudes over 6,000 ft. The average pressure within the pulmonary artery is the pulmonary arterial pressure (PAP) value that producers at high altitude should consider when selecting sires for their herd. Since PAP is a moderately to highly heritable trait (~40%), it's an indicator trait that can be used to minimize the risk of brisket disease.

## EPD Explanation

CED - Calving Ease Direct

BW - Birth Weight

WW - Weaning Weight

YW - Yearling Weight

SC - Scrotal Circumference

MILK

M&G - Milk & Growth

Fat

REA - Rib Eye Area

Marb - Marbling

Hereford Association Average for 2017  
CED 3.1 BW 2.8 WW 54 YW 87 SC 1.0  
MILK 26 M&G 53 Fat .017 REA .41 Marb .12

EPD's were current as of December 1, 2023.

## Interpreting PAP

- **Up to 41:** Considered an excellent score for any animal more than 12 months. Ideal for high altitudes.
- **PAP 41-45:** An acceptable range for animals greater than 16 months. Adequate for high altitudes.
- **PAP 45-48:** An acceptable range for only older animals that have been in high elevations for an extended period of time. Younger animals may become problematic at high altitudes.
- **Pap Greater than 49:** Animals scoring in this range must be considered high-risk at altitude, not only for themselves but offspring.



## Buying a DCR bull is just the beginning!

Let us help you with your marketing options through Washakie Feeders and our buyer base.

- Calf marketing with the ability to get performance data back.
- Back grounding and retained ownership — facilitating finishing options if desired.
- Heifer development with breeding options

*DCR not only retains ownership in our home-raised cattle, but also purchase many of our bull customers' calves. The acquisition of Washakie Feeders has allowed us the opportunity to collect feedlot and carcass data on larger groups of DCR-bred calves. Few other operations offer a direct link to value added markets. We want to work with you!*

**Feed data on 525 head of DCR-sired steers on 2/20/2022.**

- 203 days on feed
- 4.28 lb./day gained
- 5.86 dry matter conversion
- 98% Choice or better
- Cattle fed for \$1.025/lb. gained when the average cost nationally was around \$1.25.

### F1 Baldy Females

- At DCR/Washakie Feeders we develop, AI and market large groups of F1 females sired by DCR bulls as well as solid black heifers for operations looking to produce solid F1 calves. Give us a call to see how we can help you.

### PAP Testing

- Those of us that operate at high altitudes understand the impact Altitude Sickness can have on our bottom line. We also understand the downward genetic pressure we can put on it through selection. The 110 head of bulls in the sale average 38 on their PAP test. There were only two at 42. Consistency is key! We offer the largest selection of PAP tested cattle in the breed.

**TERMS & CONDITIONS:** Terms of the sale are cash or check. Every animal becomes the property of the buyer directly after the animal has been sold.

**BULL DEVELOPMENT:** Bulls are run in a commercial environment beside their mothers on native forage until weaning. After weaning, they are developed on hay and light grain ration through the winter, and then returned to forage as yearlings. They have been ran outside in large pastures since.

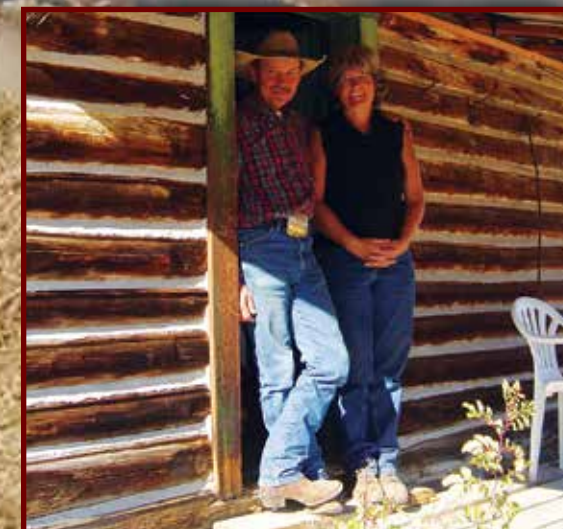
**BULL FEEDING:** Arrangements can be made for bulls to be returned to Washakie Feeders and put on feed. Bulls will be kept in the contemporary group they were in here at DCR. The bulls risk will be incurred by the buyer, insurance options will be available sale day.

**BULL GUARANTEE:** All bulls have passed a semen test and a breeding soundness evaluation by 2 independent vet clinics prior to the sale. To ensure your investment, DCR will guarantee all bulls selling against breeding injury and to be sound breeders for the first breeding season. Breeding season is defined as a 90 day period following the first turn out of the bull. If a problem should arise, contact us prior to the salvage of the bull, options will be discussed and a credit of the bull's purchase value minus salvage value will be given in an upcoming sale. Please notify us as soon as the problem or injury occurs. No claims will be accepted after September 1st.

**HEIFER DEVELOPMENT:** Arrangements can be made to return heifers to Washakie Feeders to be developed and AI'ed to the bull of your choice, including any of the DCR calving ease bulls. Costs can be negotiated between the buyer, the lot, and DCR after the sale.

**DELIVERY:** Free delivery to central locations in the Wyoming area. Delivery arrangements can be made to other states after the sale. If you pick up your bull sale day you will get a \$50 rebate.

**LIABILITY:** All persons who attend the sale do so at their own risk. The owners and sale barn assume no liability.



**Bruce and Mary Agar**  
Faith, Family & Livestock  
45 Years of Vision

# Come join us at our first Cattlemans Summit

**February 6  
6:00**

**Green Hills Restaurant & Bar  
1455 Airport Rd.**

**Durbin Creek Ranch and Anipro Supplements are teaming up to offer cattlemen an opportunity to learn more about the Agriculture business we love. Held in conjunction with our pre-sale dinner.**

**The Following Speakers will be Speaking:**

**Shane Bedwell- American Hereford Association  
- *What Heterosis has to offer***

**Colton Oney- Anipro Supplements  
- *Gestational Nutrition***

**Dinner Starts at 6:00  
Speakers will follow the dinner.**

- **Liquid Supplements**
- **Low Moisture Cooked Tubs**
- **Weatherized Mineral**
- **Confined Feed Balancers**



**Amy Landrus  
Contract Sales Representative  
Powell, WY  
Mobile: (307) 254 - 1454**

**We would like to thank Anipro for sponsoring the pre-sale dinner.**



VIEWING THE AUCTION ONLINE OR ON TV

The auction will be broadcast online at Bid.SuperiorLivestock.com and the pre-recorded videos will also be hosted there prior to and on sale day. The auction will also be broadcast on SLA-TV which is Dish Network channel 997.

ONLINE BIDDING

Go to Bid.SuperiorLivestock.com for Superior's new online bidding platform. If you have not registered there before you will need to create an account if you wish to bid (there is no registration required just to watch the auction). Once you have created an account, request a buyer number and you will then be able to bid online with the largest and most trusted cattle marketing entity in North America. Superior's new platform allows you to see both the live stream of the auction AND the pre-recorded videos on one screen at the same time!

TURN IN BIDS OVER THE PHONE

This is Superior's suggested bidding method for anybody who does not have consistent, high-speed internet. You still must register an account at Bid.SuperiorLivestock.com and request a buyer number and upon doing so you will see the bid line phone number. Just watch the auction online or on TV and call in at least 2 lots ahead of the lot you are looking to bid on.

FOR HELP WITH REGISTRATION OR ANY PART OF THE BIDDING PROCESS PLEASE

CALL SUPERIOR AT (800) 422-2117.

**Reference Sires**

# DCR 320 Trust 7237



NJW 73S M326 Trust 100W ET  
DCR 100W Trusted 320 ET  
DCR Diana 7020

BP 44U Anchor 38Y  
DCR 38Y Dominet 4046  
DCR 713 Dominet 1029

KCF Bennett 3008 M326  
NJW P606 72N Daydream 73S  
SB Boomer 14K  
DCR 703 Diana 2008

Anchor 44U  
K 64H Ribstone Lady 184M  
DCR Koot 713  
DCR Dutchess E50 0016

CED	BW	WW	YW	SC	MILK	M&G	FAT	REA	MARB	BMI	BII	CHB
3.8	2.4	55	83	0.9	22	50	0.051	0.30	0.17	\$385	\$463	\$102

**Powerful Payweight, Guaranteed Maternal!**

Sometimes numbers don't tell the whole story. Whenever you walk through the pens of bulls and start sorting rugged, stout, cowboy type bulls you will end up with more 7237 sons in your pen than not. Yet when you study the females in his pedigree every one stayed in production past 10.

These are cattle designed for the rancher that still has to pay the bills.

**DCR 1** **DCR 7237 TRUSTED 2343**  
BW: 68 WW: 650 YW: 1270  
4/10/2022 PAP: 38 Dams Age: 5 REG #: 44518530

DCR 100W Trusted 320 ET  
DCR 320 Trust 7237  
DCR 38Y Dominet 4046

NJW 73S M326 Trust 100W ET  
DCR Diana 7020  
BP 44U Anchor 38Y  
DCR 713 Dominet 1029

DCR 713 Range Boss 479  
DCR 479 Dom 7023  
DCR 8046 Dom 2033

DCR Koot 713  
DCR Diana 7020  
TW Hercules  
DCR 3232 Dom 8049

CED	BW	WW	YW	SC	MILK	M&G	FAT	REA	MARB	BMI	BII	CHB
1.5	2.9	52	83	0.9	20	46	0.021	0.38	0.14	\$320	\$389	\$112

**The Durbin Creek Prototype!**

What a way to kick off the 2024 sale. The only Trusted 7237 son offered in the sale and what an opportunity to add a total outcross pedigree herd bull to your program. This bull is conformationally correct with a strong, powerful design that is made to cover cows for years to come. A special individual that will add economic quality to any operation.



DCR 479 Dom 7023  
Dam of Lot 1

**Reference Sires**

# Hills-Galore 44Z Resolute 128D



KCF Bennett Revolution X51  
RSY X51 Revolution 4102  
RST MS 1030 Top Secret 5128

JB 531 Braxton Cal 605U  
Hills-Galore 52R Calli 44Z  
Hills-Galore 32G May 52R

MSU TCF Revolution 4R  
KCF Miss Proficient U201  
KT Top Secret 5128  
MS RST 5059 Optimum 9102

Anchor Braxton  
JB 793 Lady Voo 531S  
OXH Mark Domino 8020  
Hills-Galore 32G May 52R

CED	BW	WW	YW	SC	MILK	M&G	FAT	REA	MARB	BMI	BII	CHB
3.4	2.1	67	123	1.1	24	58	0.061	0.94	0.26	\$366	\$457	\$143

**Six Trait Leader!**

One of the most sought after, curve bending bulls in the breed. Resolute has sired ample of rib and hip shape in the cattle that are very easy fleshing.

**DCR 2** **DCR SRH 128D RESOLUTE 2248 ET**  
BW: 80 WW: 668 YW: 1230  
4/1/2022 PAP: 39 Dams Age: ET REG #: 44514628

RST X51 Revolution 4102  
Hills-Galore 44Z Resolute 128D  
Hills-Galore 52R Calli 44Z

KCF Bennett Revolution X51  
RST MS 1030 Top Secret 5128  
JB 531 Braxton Cal 605U  
Hills-Galore 32G May 52R

C Miles Mckee 2103 ET  
C R111 Lady Miles 4026 ET  
S Lady Advance 176L R111 ET

NJW 98S R117 Ribeye 88X ET  
C Notice ME ET  
KCF Bennett 3008 M326  
HH Miss Advance 176L

CED	BW	WW	YW	SC	MILK	M&G	FAT	REA	MARB	BMI	BII	CHB
-0.1	4.1	63	109	1	24	56	0.026	0.65	0.23	\$348	\$434	\$134

The first of four Resolute 128D sons, and what an impressive individual, and a great representation of what you can expect with the Resolute cattle. Powerful constructed bull with the kind of depth and substance that could truly change a program. Couple that with an abundance of foot and bone and a country covering walk, you've got yourself a true herd bull prospect.

**DCR 3** **DCR SRH 128 RESOLUTE 2378 ET**  
BW: 80 WW: 720 YW: 1170  
4/13/2022 PAP: 37 Dams Age: ET REG #: 44514639

Horned



**DCR DCR SRH 128D RESOLUTE 2276 ET**

**4** BW: 52 WW: 714 YW: 1230  
 4/5/2022 PAP: 37 Dams Age: ET REG #: 44514629

RST X51 Revolution 4102  
 Hills-Galore 44Z Resolute 128D  
 Hills-Galore 52R Calli 44Z

KCF Bennett Revolution X51  
 RST MS 1030 Top Secret 5128  
 JB 531 Braxton Cal 605U  
 Hills-Galore 32G May 52R

CRR 5280  
 C 5280 Bailee 7117 ET  
 C Bailees McKee 4297 ET

CRR 719 Catapult 109  
 CRR 425 Kelly 178  
 C Miles Mckee 2103 ET  
 BR Bailee 1066 ET

CED	BW	WW	YW	SC	MILK	M&G	FAT	REA	MARB	BMI	BII	CHB
2.8	3.7	66	112	1.1	24	57	0.021	0.74	0.15	\$397	\$482	\$134

Mellow and Soggy!

Part one of one of the most interesting set of flush brothers ever at DCR! If you are looking to add a superstar herd bull to your program, lot 4 should be your pick. A rare combination of frame, free movement, and as much depth and substance as you will ever see on a Hereford bull. Couple that with an easy disposition and you have yourself a special individual.

**DCR DCR SRH 128D RESOLUTE 2336 ET**

**5** BW: 74 WW: 592 YW: 1265  
 4/9/2022 PAP: 36 Dams Age: ET REG #: 44514630

C omplete power package!

If you are wanting to add one of the best Hereford bulls ever offered here at DCR, this is your opportunity. This bull provides an opportunity to add exclusive genetics, only available at DCR in a phenotypical package that is almost impossible to fault. You will drive your wheels off trying to find a bull with more length, depth, bone and overall substance.



CED	BW	WW	YW	SC	MILK	M&G	FAT	REA	MARB	BMI	BII	CHB
-3.0	4.6	50	97	0.9	29	54	0.021	0.42	0.13	\$316	\$382	\$129

**Reference Sire****DCR 376 Dependable 8200**

NJW 12E 4037 Duration 136X ET  
 DCR 136X Dependable 376  
 DCR 7006 Miss Daisy 9037

TW Hercules  
 DCR Polly 3053  
 Remitali Polly 411T

THM Durango 4037  
 NJW 25C 1A Vaca 12E  
 K&B Red Felton 7006T  
 DCR Patricia 25E 0013

MSU TCF Revolution 4R  
 Ash Anne 25U  
 Remitali Precision 455P  
 Remitali Polly 17M

**Pigment & Power!**

8200 is the next generation of Dependable bred cattle at DCR. Year after year they continue to pay the bills. Sire of moderate, stout, easy fleshing cattle that excel at elevation. Bulls have a breeders look to them and daughters are sweet and productive looking. High seller from our 2020 bull sale.



Daughters of DCR 376 Dependable 8200

**DCR 6 DCR 8200 DEPENDABLE 2001**  
 BW: 76 WW: 592 YW: 1165  
 2/27/2022 PAP: 38 Dams Age: 3 REG #: 44332875

DCR 136X Dependable 376  
**DCR 376 Dependable 8200**  
 DCR Polly 3053

Churchill Manhattan 428B ET  
**DCR 428B Diana 9600**  
 DCR 199B Diana 7622

NJW 12E 4037 Duration 136X ET  
 DCR 7006 Miss Daisy 9037  
 TW Hercules  
 Remitall Polly 411T

Churchill Sensation 028X  
 Churchill Lady 002X ET  
 NJW 78P 88X Cowboss 199B ET  
 DCR Diana 5028



**CED BW WW YW SC MILK M&G FAT REA MARB BMI BII CHB**  
 -0.3 3.5 55 97 1.1 30 57 0.021 0.48 0.11 \$349 \$420 \$119

**DCR 9 DCR 8200 DEPENDABLE 2013**  
 BW: 78 WW: 560 YW: 1005  
 3/6/2022 PAP: 41 Dams Age: 3 REG #: 44503024

DCR 136X Dependable 376  
**DCR 376 Dependable 8200**  
 DCR Polly 3053

Churchill Manhattan 428B ET  
**DCR 428B Lauretta 9626**  
 DCR 48B Lauretta 6323

NJW 12E 4037 Duration 136X ET  
 DCR 7006 Miss Daisy 9037  
 TW Hercules  
 Remitall Polly 411T

Churchill Sensation 028X  
 Churchill Lady 002X ET  
 BAR-RZ 980 Babe Ruth 48B  
 DCR 713 Lauretta 2034



**CED BW WW YW SC MILK M&G FAT REA MARB BMI BII CHB**  
 0.6 3.3 51 91 0.9 27 52 0.031 0.49 0.12 \$346 \$414 \$124  
 Horned



**DCR 7 DCR 8200 Dependable 2003**  
 BW: 73 WW: 675 YW: 1215  
 3/1/2022 PAP: 36 Dams Age: 3 REG #: 44521262

DCR 136X Dependable 376  
**DCR 376 Dependable 8200**  
 DCR Polly 3053

Churchill Manhattan 428B ET  
**DCR 428B Dominet 9643**  
 DCR 479 Dominet 7095

NJW 12E 4037 Duration 136X ET  
 DCR 7006 Miss Daisy 9037  
 TW Hercules  
 Remitall Polly 411T

Churchill Sensation 028X  
 Churchill Lady 002X ET  
 DCR 713 Range Boss 479  
 DCR 136X Dominet 4053

**CED BW WW YW SC MILK M&G FAT REA MARB BMI BII CHB**  
 0.0 3.5 54 96 1.0 27 54 0.024 0.46 0.11 \$330 \$399 \$121



**DCR 10 DCR 8200 DEPENDABLE 2043**  
 BW: 75 WW: 785 YW: 1255  
 3/15/2022 PAP: 36 Dams Age: 3 REG #: 44333828

DCR 136X Dependable 376  
**DCR 376 Dependable 8200**  
 DCR Polly 3053

Churchill Manhattan 428B ET  
**DCR 428B Dominet 9627**  
 DCR HD 199B Dominet 7633

NJW 12E 4037 Duration 136X ET  
 DCR 7006 Miss Daisy 9037  
 TW Hercules  
 Remitall Polly 411T

Churchill Sensation 028X  
 Churchill Lady 002X ET  
 NJW 78P 88X Cowboss 199B ET  
 DCR Dominet 5099

**CED BW WW YW SC MILK M&G FAT REA MARB BMI BII CHB**  
 3.9 1.6 43 82 0.8 30 51 0.051 0.72 0.1 \$379 \$439 \$118  
 Walking in the pen, you will no doubt find this superstar of a bull. One of the most phenotypically correct and eye-catching bulls offered. A true image of what the Dependable 8200 cattle bring to the program. Powerful, lots of bone and substance with as correct of gate and placement of foot as you'll find.

**DCR 8 DCR 8200 DEPENDABLE 2012**  
 BW: 74 WW: 700 YW: 1205  
 3/5/2022 PAP: 37 Dams Age: 3 REG #: 44422207

DCR 136X Dependable 376  
**DCR 376 Dependable 8200**  
 DCR Polly 3053

BAR-RZ 980 Babe Ruth 48B  
**DCR 48B Daisy 9606**  
 DCR 38T Daisy 016

NJW 12E 4037 Duration 136X ET  
 DCR 7006 Miss Daisy 9037  
 TW Hercules  
 Remitall Polly 411T

CRR Helton 980  
 BAR-RZ 72S Waverly 73W  
 NJW 167L Radar 38T  
 DCR 0302 Cindy 8025



**CED BW WW YW SC MILK M&G FAT REA MARB BMI BII CHB**  
 -0.5 3.6 52 87 1 25 51 0.021 0.42 0.1 \$314 \$380 \$122

**DCR 11 DCR 8200 DEPENDABLE 2059**  
 BW: 78 WW: 530 YW: 1075  
 3/19/2022 PAP: 36 Dams Age: 3 REG #: 44513418

DCR 136X Dependable 376  
**DCR 376 Dependable 8200**  
 DCR Polly 3053

Churchill Manhattan 428B ET  
**DCR 428B Lady Dom 9631**  
 DCR 48B Lady Dom 7602

NJW 12E 4037 Duration 136X ET  
 DCR 7006 Miss Daisy 9037  
 TW Hercules  
 Remitall Polly 411T

Churchill Sensation 028X  
 Churchill Lady 002X ET  
 BAR-RZ 980 Babe Ruth 48B  
 DCR Lady Dom 5048



**CED BW WW YW SC MILK M&G FAT REA MARB BMI BII CHB**  
 -0.6 4 56 95 1.1 29 57 0.031 0.5 0.13 \$345 \$417 \$125

**DCR 8200 DEPENDABLE 2071**  
**12** BW: 80 WW: 705 YW: 1185  
 3/21/2022 PAP: 37 Dams Age: 3 REG #: 44339522

DCR 136X Dependable 376  
**DCR 376 Dependable 8200**  
 DCR Polly 3053  
  
 THM 10Y Imperial 4110 ET  
**DCR 428B Standard Lady 9623**  
 DCR 199B Standard Lady 7625

NJW 12E 4037 Duration 136X ET  
 DCR 7006 Miss Daisy 9037  
 TW Hercules  
 Remitall Polly 411T  
  
 NJW 73S M326 Trust 100W ET  
 THM 163M Victra 0778  
 NJW 78P 88X Cowboss 199B ET  
 DCR 38Y Standard 4031



**CED BW WW YW SC MILK M&G FAT REA MARB BMI BII CHB**  
 0.7 3.6 50 88 1.1 30 55 0.031 0.46 0.1 \$409 \$477 \$119

If you're looking for a little bit more moderate frame on a herd bull but don't want to sacrifice any substance, Lot 11 is your bull. A strong made bull that is built to last in any environment. Couple his depth and easy disposition, this is a great individual to add to any program.

**DCR 8200 DEPENDABLE 2091**  
**13** BW: 78 WW: 510 YW: 1060  
 3/26/2022 PAP: 37 Dams Age: 3 REG #: 44340547



DCR 136X Dependable 376  
**DCR 376 Dependable 8200**  
 DCR Polly 3053

Hills-Galore 44Z Resolute 128D  
**DCR 128D Dominet 9233 ET**  
 DCR 136X Dominet 3021

NJW 12E 4037 Duration 136X ET  
 DCR 7006 Miss Daisy 9037  
 TW Hercules  
 Remitall Polly 411T

RST X51 Revolution 4102  
 Hills-Galore 52R Calli 44Z  
 NJW 12E 4037 Duration 136X ET  
 DCR 0302 Lady Dom 8047

**CED BW WW YW SC MILK M&G FAT REA MARB BMI BII CHB**  
 0.4 3.9 52 98 0.9 26 52 0.031 0.51 0.14 \$356 \$426 \$121

Owned with Whispering Winds Farm



DCR 128D Dominet 9233 ET  
 Dam of Lot 13



DCR 428B Standard 9623  
 Dam of Lot 12

**Reference Sire**

**NJW 78P 88X Cowboss 199B ET**



**CED BW WW YW SC MILK M&G FAT REA MARB BMI BII CHB**  
 2.2 3.3 56 96 1.4 37 65 -0.009 0.55 0.01 \$321 \$384 \$105

**Six Trait Leader!!**

The longer we use 199B in our commercial program the more impressive his real world data becomes! His calves come easy, mature early, convert feed and hang up dollar generating carcasses. Sons are stout and economic, daughters are broody and very productive. Sired the Champion Carcass Steer at the Hot Springs County Fair in 2019. Feeder calves killed the last couple years have graded 98% choice or better. With over 700 hd of progeny recorded, you will not find a truer proven sire!



DCR 199B Daisy 9239  
 Cowboss 199B Daughter



DCR 199B Image 9306  
 Cowboss 199B Daughter

SHF Rib Eye M326 R117  
 NJW 98S R117 88X ET  
 NJW 9126J Dew Domino 98S  
  
 RU 20X Boulder 57G  
 NJW BW Ladysport Dew 78P  
 Saddle VLY Ladysport 120  
  
 KCF Bennett 3008 M326  
 HVH Miss Hudson 83K 8M  
 CL1 Domino 9126J 1ET  
 NJW 57G 74G Dew 1ET  
  
 Remitall Keynote 20X  
 RU 10A Dew 57D  
 RU Duster 60D  
 GK Ladysport 131A



**DCR 14 DCR 199B COWBOSS 2068**  
 BW: 72 WW: 606 YW: 1195  
 3/20/2022 PAP: 36 Dams Age: 3 REG #: 44395510

NJW 98S R117 Ribeye 88X ET  
 NJW 78P 88X Cowboss 199B ET  
 NJW BW Ladysport Dew 78P ET

SHF Rib Eye M326 R117  
 NJW 9126J Dew Domino 98S  
 RU 20X Boulder 57G  
 BBSF 465Y Boyd 78B

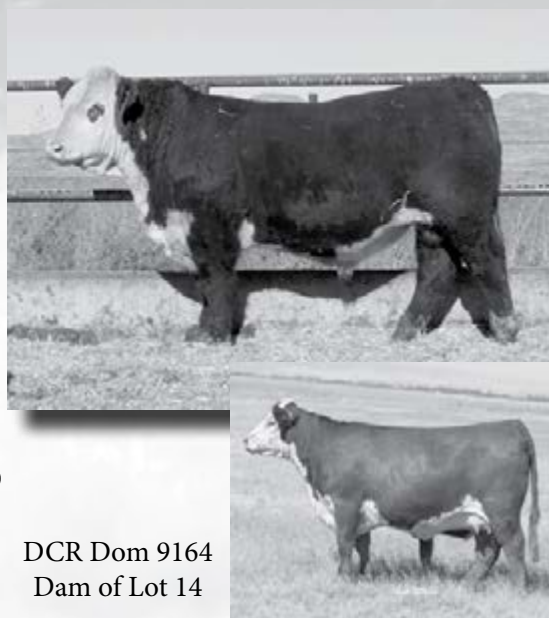
DCR 428B Manhattan 6009  
 DCR Dom 9164  
 DCR 199B Dom 7090

Churchill Manhattan 428B  
 DCR 38Y Ella C 4085  
 NJW 78P 88X Cowboss 199B ET  
 DCR 3232 Dom 7030

**CED BW WW YW SC MILK M&G FAT REA MARB BMI BII CHB**  
 4.3 2.6 63 101 1.4 35 67 0.001 0.57 0.11 \$297 \$373 \$113

One of the most complete Cowboss sons ever offered at DCR. Length, rib shape and eye appeal to burn all wrapped in a package with solid numbers. Dam has become our lead donor.

DCR Dom 9164  
 Dam of Lot 14



**DCR 17 DCR 199B COWBOSS 2225**  
 BW: 80 WW: 696 YW: 1150  
 3/27/2022 PAP: 40 Dams Age: 4 REG #: 44394481

NJW 98S R117 Ribeye 88X ET  
 NJW 78P 88X Cowboss 199B ET  
 NJW BW Ladysport Dew 78P ET

SHF Rib Eye M326 R117  
 NJW 9126J Dew Domino 98S  
 RU 20X Boulder 57G  
 Saddle VLY Ladysport 120

Churchill Manhattan 428B ET  
 DCR HD 428B Choice 8105  
 DCR HD 199B Choice 6244

Churchill Sensation 028X  
 Churchill Lady 002X ET  
 NJW 78P 88X Cowboss 199B ET  
 DCR 638 Choice 0120

**CED BW WW YW SC MILK M&G FAT REA MARB BMI BII CHB**  
 0.7 3.6 59 97 1.3 34 63 0.011 0.53 0.03 \$345 \$414 \$106



**DCR 15 DCR 199B COWBOSS 2210**  
 BW: 65 WW: 624 YW: 1165  
 3/22/2021 PAP: 38 Dams Age: 4 REG #: 44394462

NJW 98S R117 Ribeye 88X ET  
 NJW 78P 88X Cowboss 199B ET  
 NJW BW Ladysport Dew 78P ET

SHF Rib Eye M326 R117  
 NJW 9126J Dew Domino 98S  
 RU 20X Boulder 57G  
 BBSF 465Y Boyd 78B

BBSF 465Y Boyd 7813  
 BP 78B Mis Wayne 12E  
 BP 38T Standard Lady 167Z

Square-D John Wayne 465Y  
 BBSF 52 Racquelle 65Y  
 Standard 68L Dom Lad 38T  
 K 39D Red Lady 6N

**CED BW WW YW SC MILK M&G FAT REA MARB BMI BII CHB**  
 3.5 3.4 53 82 1.3 31 58 0.011 0.42 0.12 \$333 \$403 \$112



**DCR 18 DCR 199B COWBOSS 2229**  
 BW: 95 WW: 742 YW: 1285  
 3/29/2022 PAP: 36 Dams Age: 4 REG #: 44394593

NJW 98S R117 Ribeye 88X ET  
 NJW 78P 88X Cowboss 199B ET  
 NJW BW Ladysport Dew 78P ET

SHF Rib Eye M326 R117  
 NJW 9126J Dew Domino 98S  
 RU 20X Boulder 57G  
 Saddle VLY Ladysport 120

Mohican THM Excede Z426  
 DCR Z426 Sunny 8110  
 DCR 428B Sunny 6206

TH 133U719T Upgrade 69X  
 NJW M326 Unforgettable 76W ET  
 Churchill Manhattan 428B ET  
 DCR 57X Sunny 4020

**CED BW WW YW SC MILK M&G FAT REA MARB BMI BII CHB**  
 -5.3 5.6 65 109 1.3 34 66 0.001 0.44 -0.02 \$377 \$450 \$103

**DCR 16 DCR 199B COWBOSS 2214**  
 BW: 110 WW: 680 YW: 1250  
 3/25/2022 PAP: 36 Dams Age: 8 REG #: 44394472

NJW 98S R117 Ribeye 88X ET  
 NJW 78P 88X Cowboss 199B ET  
 NJW BW Ladysport Dew 78P ET

SHF Rib Eye M326 R117  
 NJW 9126J Dew Domino 98S  
 RU 20X Boulder 57G  
 Saddle VLY Ladysport 120

DCR 713 Kootenay 135  
 DCR 135 Lady Dom 4068  
 DCR 3010 Dom 6001

DCR Koot 713  
 DCR 703 Flora 1015  
 UPS Kootenay 3232 1ET  
 DCR Dominet 14K

**CED BW WW YW SC MILK M&G FAT REA MARB BMI BII CHB**  
 -0.4 3.8 53 92 1.2 28 54 -0.009 0.45 0.06 \$304 \$368 \$108

Scurred



**DCR 19 DCR 199B COWBOSS 2230**  
 BW: 95 WW: 620 YW: 1150  
 3/30/2022 PAP: 36 Dams Age: 4 REG #: 44394594

NJW 98S R117 Ribeye 88X ET  
 NJW 78P 88X Cowboss 199B ET  
 NJW BW Ladysport Dew 78P ET

SHF Rib Eye M326 R117  
 NJW 9126J Dew Domino 98S  
 RU 20X Boulder 57G  
 Saddle VLY Ladysport 120

DCR 136X Dependable 376  
 DCR 376 Tara 8246  
 DCR 713 Tara 1034

NJW 12E 4037 Duration 136X ET  
 DCR 7006 Miss Daisy 9037  
 DCR Koot 713  
 DH Tara Tradition 278

**CED BW WW YW SC MILK M&G FAT REA MARB BMI BII CHB**  
 -5.5 5.9 59 104 1.1 32 62 -0.009 0.43 0 \$312 \$378 \$108



**DCR 20 DCR 199B COWBOSS 2236**  
 BW: 85 WW: 630 YW: 1080  
 3/31/2022 PAP: 37 Dams Age: 3 REG #: 44394602

NJW 98S R117 Ribeye 88X ET  
 NJW 78P 88X Cowboss 199B ET  
 NJW BW Ladysport Dew 78P ET

SHF Rib Eye M326 R117  
 NJW 9126J Dew Domino 98S  
 RU 20X Boulder 57G  
 Saddle VLY Ladysport 120

Hills-Galore 36T 605 Easy 10B  
 BP 10B Miss Cal 4E  
 BP 38T Standard Lady 51C

JB 531 Brazton Cal 605U  
 Hills-Galore 91F 20L Glena 36T  
 Standard 68L Dom Lad 38T  
 BP 617P STD Dom Lady 44U



**CED BW WW YW SC MILK M&G FAT REA MARB BMI BII CHB**  
 -2.2 5.8 61 100 1.2 33 63 -0.009 0.44 -0.05 \$342 \$407 \$102

**DCR 23 DCR 199B COWBOSS 2243**  
 BW: 65 WW: 564 YW: 1085  
 4/1/2022 PAP: 35 Dams Age: 8 REG #: 44419762

NJW 98S R117 Ribeye 88X ET  
 NJW 78P 88X Cowboss 199B ET  
 NJW BW Ladysport Dew 78P ET

SHF Rib Eye M326 R117  
 NJW 9126J Dew Domino 98S  
 RU 20X Boulder 57G  
 Saddle VLY Ladysport 120

BP 44U Anchor 38Y  
 DCR 38Y Dominet 4046  
 DCR 713 Dominet 1029

Anchor 44U  
 K 64H Ribstone Lady 184M  
 DCR Koot 713  
 DCR Dutchess E50 0016



**CED BW WW YW SC MILK M&G FAT REA MARB BMI BII CHB**  
 6.4 1.5 46 77 1.1 27 50 0.011 0.41 0.09 \$324 \$385 \$104



**DCR 21 DCR 199B COWBOSS 2237**  
 BW: 80 WW: 735 YW: 1090  
 3/31/2022 PAP: 36 Dams Age: 9 REG #: 44394603

NJW 98S R117 Ribeye 88X ET  
 NJW 78P 88X Cowboss 199B ET  
 NJW BW Ladysport Dew 78P ET

SHF Rib Eye M326 R117  
 NJW 9126J Dew Domino 98S  
 RU 20X Boulder 57G  
 Saddle VLY Ladysport 120

NJW 73S M326 Trust 100W ET  
 DCR 100W Diana 3016 ET  
 DCR Diana 7020

KCF Bennett 3008 M326  
 NJW P606 72N Daydream 73S  
 SB Boomer 14K  
 DCR 703 Diana 2008

**CED BW WW YW SC MILK M&G FAT REA MARB BMI BII CHB**  
 0.3 4 55 93 1.2 29 56 -0.019 0.54 0.05 \$372 \$439 \$112



**DCR 24 DCR 199B COWBOSS 2246**  
 BW: 70 WW: 610 YW: 1105  
 4/1/2022 PAP: 39 Dams Age: 6 REG #: 44394613

NJW 98S R117 Ribeye 88X ET  
 NJW 78P 88X Cowboss 199B ET  
 NJW BW Ladysport Dew 78P ET

SHF Rib Eye M326 R117  
 NJW 9126J Dew Domino 98S  
 RU 20X Boulder 57G  
 Saddle VLY Ladysport 120

NJW 78P 88X Cowboss 199B  
 DCR 199B Silver 6299  
 DCR R117 Silver 1023

NJW 98S R117 Ribeye 88X ET  
 NJW BW Ladysport Dew 78P ET  
 SHF Rib Eye M326 R117  
 DH Silver Sensation 229

**CED BW WW YW SC MILK M&G FAT REA MARB BMI BII CHB**  
 4.1 2.2 52 87 1.3 33 59 -0.009 0.48 0.09 \$336 \$402 \$110

**DCR 22 DCR 199B COWBOSS 2240**  
 BW: 80 WW: 668 YW: 1190  
 3/31/2022 PAP: 36 Dams Age: 9 REG #: 44394638

NJW 98S R117 Ribeye 88X ET  
 NJW 78P 88X Cowboss 199B ET  
 NJW BW Ladysport Dew 78P ET

SHF Rib Eye M326 R117  
 NJW 9126J Dew Domino 98S  
 RU 20X Boulder 57G  
 Saddle VLY Ladysport 120

MSU TCF Revolution 4R  
 LH MS Revolution 313  
 LH MS Maxium 110

Feltons Legend 242  
 MSU TCF Rachael ET 54N  
 Golden-Oak 4J Maxium 28M  
 LH MS World Class 896



**CED BW WW YW SC MILK M&G FAT REA MARB BMI BII CHB**  
 0.6 4 57 94 1.2 28 57 -0.009 0.64 0.02 \$333 \$398 \$112

**DCR 25 DCR 199B COWBOSS 2252**  
 BW: 60 WW: 552 YW: 1040  
 4/1/2022 PAP: 38 Dams Age: 5 REG #: 44394640

NJW 98S R117 Ribeye 88X ET  
 NJW 78P 88X Cowboss 199B ET  
 NJW BW Ladysport Dew 78P ET

SHF Rib Eye M326 R117  
 NJW 9126J Dew Domino 98S  
 RU 20X Boulder 57G  
 Saddle VLY Ladysport 120

NJW 78P 88X Cowboss 199B  
 DCR 199B Diana 7636  
 DCR Diana 7020

NJW 98S R117 Ribeye 88X ET  
 NJW BW Ladysport Dew 78P ET  
 SB Boomer 14K  
 DCR 703 Diana 2008



**CED BW WW YW SC MILK M&G FAT REA MARB BMI BII CHB**  
 6.3 1.5 49 83 1.3 31 55 -0.009 0.51 0.08 \$327 \$388 \$108

**DCR 26** **DCR 199B COWBOSS 2273**  
 BW: 65 WW: 696 YW: 1220  
 4/5/2022 PAP: 38 Dams Age: 5 REG #: 44394678

NJW 98S R117 Ribeye 88X ET  
 NJW 78P 88X Cowboss 199B ET  
 NJW BW Ladysport Dew 78P ET

SHF Rib Eye M326 R117  
 NJW 9126J Dew Domino 98S  
 RU 20X Boulder 57G  
 Saddle VLY Ladysport 120

Churchill Manhattan 428B ET  
 DCR 428B Fasanation 7089  
 DCR 453Y Fasanation 5026

Churchill Sensation 028X  
 Churchill Lady 002X ET  
 TH 43P 719T Victor 453Y ET  
 DCR 136X Fascination 3040

**CED BW WW YW SC MILK M&G FAT REA MARB BMI BII CHB**  
 5.8 1.2 52 83 1.2 30 56 0.011 0.46 0.06 \$335 \$399 \$106



**DCR 29** **DCR 199B COWBOSS 2283**  
 BW: 77 WW: 590 YW: 1105  
 4/6/2022 PAP: 37 Dams Age: 5 REG #: 44394694

NJW 98S R117 Ribeye 88X ET  
 NJW 78P 88X Cowboss 199B ET  
 NJW BW Ladysport Dew 78P ET

SHF Rib Eye M326 R117  
 NJW 9126J Dew Domino 98S  
 RU 20X Boulder 57G  
 Saddle VLY Ladysport 120

Churchill Manhattan 428B ET  
 DCR 428B Satandard 7077  
 DCR Miss Standard 5040

Churchill Sensation 028X  
 Churchill Lady 002X ET  
 THR Thor 3068A  
 DCR 713 Standard 1028

**CED BW WW YW SC MILK M&G FAT REA MARB BMI BII CHB**  
 1.9 3.3 60 97 1.4 33 63 0.011 0.55 0.05 \$345 \$416 \$109



**DCR 27** **DCR 199B COWBOSS 2277**  
 BW: 72 WW: 585 YW: 1130  
 4/5/2022 PAP: 38 Dams Age: 7 REG #: 44394681

NJW 98S R117 Ribeye 88X ET  
 NJW 78P 88X Cowboss 199B ET  
 NJW BW Ladysport Dew 78P ET

SHF Rib Eye M326 R117  
 NJW 9126J Dew Domino 98S  
 RU 20X Boulder 57G  
 Saddle VLY Ladysport 120

DCR 100W Trust 318 ET  
 DCR Gladys 5041  
 Remitall Gladys 351R

NJW 73S M326 Trust 100W ET  
 DH Devo May 404  
 Remitall Olympian ET 262L  
 Remitall Gladys 268G

**CED BW WW YW SC MILK M&G FAT REA MARB BMI BII CHB**  
 2 3.5 54 92 1.2 28 55 -0.009 0.53 0.04 \$289 \$351 \$114



**DCR 30** **DCR 199B COWBOSS 2290**  
 BW: 70 WW: 612 YW: 1160  
 4/6/2022 PAP: 38 Dams Age: 4 REG #: 44520550

NJW 98S R117 Ribeye 88X ET  
 NJW 78P 88x Cowboss 199B ET  
 NJW BW Ladysport Dew 78P ET

SHF Rib Eye M326 R117  
 NJW 9126J Dew Domino 98S  
 RU 20X Boulder 57G  
 Saddle VLY Ladysport 120

Churchill Manhattan 428B ET  
 DCR RDR 428 Image 8094  
 DCR 199B Image 6281

Churchill Sensation 028X  
 Churchill Lady 002X ET  
 NJW 78P 88X Cowboss 199B ET  
 DCR 713 Image 2005

**CED BW WW YW SC MILK M&G FAT REA MARB BMI BII CHB**  
 3.0 2.5 56 93 1.4 33 62 0.011 0.54 0.05 \$330 \$397 \$109

**DCR 28** **DCR 199B COWBOSS 2281**  
 BW: 73 WW: 610 YW: 1120  
 4/6/2022 PAP: 38 Dams Age: 4 REG #: 44394692

NJW 98S R117 Ribeye 88X ET  
 NJW 78P 88X Cowboss 199B ET  
 NJW BW Ladysport Dew 78P ET

SHF Rib Eye M326 R117  
 NJW 9126J Dew Domino 98S  
 RU 20X Boulder 57G  
 Saddle VLY Ladysport 120

DCR 713 Range Boss 479  
 DCR 479 MS Yankee 8176 ET  
 MCR 3027 MS Yankee 408 313 ET

DCR Koot 713  
 DCR Diana 7020  
 UPS Domino 3027  
 MCR Yankee 408 Dominet 026 ET

**CED BW WW YW SC MILK M&G FAT REA MARB BMI BII CHB**  
 2.5 2.6 54 91 1.2 32 59 -0.019 0.52 0.05 \$320 \$383 \$115



**DCR 31** **DCR 199B COWBOSS 2303**  
 BW: 72 WW: 696 YW: 1240  
 4/7/2022 PAP: 38 Dams Age: 8 REG #: 44394720

NJW 98S R117 Ribeye 88X ET  
 NJW 78P 88X Cowboss 199B ET  
 NJW BW Ladysport Dew 78P ET

SHF Rib Eye M326 R117  
 NJW 9126J Dew Domino 98S  
 RU 20X Boulder 57G  
 Saddle VLY Ladysport 120

TH 43P 719T Victor 453Y ET  
 DCR 453Y Ella 4006  
 DCR 713 Ella 2040

TH 122 711 Victor 719T  
 TH 121L 8146 Cassandra 43P  
 DCR Koot 713  
 DCR 14K Paulina 4001

**CED BW WW YW SC MILK M&G FAT REA MARB BMI BII CHB**  
 2.9 2.4 52 85 1.1 29 55 -0.009 0.45 0.03 \$292 \$352 \$106



**DCR 32 DCR 199B COWBOSS 2308**  
 BW: 71 WW: 630 YW: 1240  
 4/7/2022 PAP: 39 Dams Age: 9 REG #: 44394726

NJW 98S R117 Ribeye 88X ET SHF Rib Eye M326 R117  
 NJW 78P 88X Cowboss 199B ET NJW 9126J Dew Domino 98S  
 NJW BW Ladysport Dew 78P ET RU 20X Boulder 57G  
 Saddle VLY Ladysport 120

DCR Justify 716 BBSF 610F Justify 79J  
 DCR 716 Leslie 3042 DH Rich Rose 505  
 DCR 3232 Way Ahead 9015 UPS Kootenay 3232 1ET  
 DH Leslie Uggums 115



**CED BW WW YW SC MILK M&G FAT REA MARB BMI BII CHB**  
 3.8 2.5 48 77 1.1 27 51 -0.009 0.38 0.04 \$328 \$386 \$102

**DCR 35 DCR 199B COWBOSS 2329**  
 BW: 63 WW: 540 YW: 1015  
 4/9/2022 PAP: 36 Dams Age: 7 REG #: 44394872

NJW 98S R117 Ribeye 88X ET SHF Rib Eye M326 R117  
 NJW 78P 88X Cowboss 199B ET NJW 9126J Dew Domino 98S  
 NJW BW Ladysport Dew 78P ET RU 20X Boulder 57G  
 Saddle VLY Ladysport 120

GRNDVIEW CMR156T Visiony 509 ET CMR GVP MR Maternal 156T  
 DCR Y509 Diana 5015 ET Remitall Ginger 23G  
 DCR Diana 7020 SB Boomer 14K  
 DCR 703 Diana 2008



**CED BW WW YW SC MILK M&G FAT REA MARB BMI BII CHB**  
 4.3 1.7 47 78 0.2 30 54 -0.009 0.51 0.12 \$348 \$408 \$116  
 Horned



**DCR 33 DCR 199B COWBOSS 2312**  
 BW: 60 WW: 710 YW: 1125  
 4/7/2022 PAP: 37 Dams Age: 4 REG #: 44394731

NJW 98S R117 Ribeye 88X ET SHF Rib Eye M326 R117  
 NJW 78P 88X Cowboss 199B ET NJW 9126J Dew Domino 98S  
 NJW BW Ladysport Dew 78P ET RU 20X Boulder 57G  
 Saddle VLY Ladysport 120

Churchill Manhattan 428B ET Churchill Sensation 028X  
 DCR 428B Diana 8092 Churchill Lady 002X ET  
 DCR 312 Diana 6005 DCR 713 Iconic 312  
 DCR HD 38T Diana 200Z

**CED BW WW YW SC MILK M&G FAT REA MARB BMI BII CHB**  
 7 0.6 55 85 1.3 32 59 0.021 0.53 0.12 \$329 \$397 \$113  
 Horned



**DCR 36 DCR 199B COWBOSS 2330**  
 BW: 64 WW: 520 YW: 1005  
 4/9/2022 PAP: 39 Dams Age: 5 REG #: 44394873

NJW 98S R117 Ribeye 88X ET SHF Rib Eye M326 R117  
 NJW 78P 88X Cowboss 199B ET NJW 9126J Dew Domino 98S  
 NJW BW Ladysport Dew 78P ET RU 20X Boulder 57G  
 Saddle VLY Ladysport 120

DCR 713 International 301 DCR Koot 713  
 DCR 301 Polly 7027 DCR 7006 Ella 9014  
 DCR Polly 3053 TW Hercules  
 Remitall Polly 411T

**CED BW WW YW SC MILK M&G FAT REA MARB BMI BII CHB**  
 5.3 2 53 86 1.3 31 57 0.001 0.55 0.09 \$304 \$369 \$113

**DCR 34 DCR 199B COWBOSS 2315**  
 BW: 82 WW: 570 YW: 1160  
 4/8/2022 PAP: 36 Dams Age: 5 REG #: 44503022

NJW 98S R117 Ribeye 88X ET SHF Rib Eye M326 R117  
 NJW 78P 88X Cowboss 199B ET NJW 9126J Dew Domino 98S  
 NJW BW Ladysport Dew 78P ET RU 20X Boulder 57G  
 Saddle VLY Ladysport 120

BAR-RZ 980 Babe Ruth 48B CRR Helton 980  
 DCR 48B Flora 7031 BAR-RZ 72S Waverly 73W  
 DCR Flora 3044 TW Hercules  
 DCR 38T Flora 001



**CED BW WW YW SC MILK M&G FAT REA MARB BMI BII CHB**  
 -1.9 3.9 53 87 1.1 29 56 0.011 0.52 0.05 \$350 \$415 \$111  
 Scurred

**DCR 37 DCR 199B COWBOSS 2357**  
 BW: 65 WW: 678 YW: 1085  
 4/11/2022 PAP: 37 Dams Age: 6 REG #: 44394910

NJW 98S R117 Ribeye 88X ET SHF Rib Eye M326 R117  
 NJW 78P 88X Cowboss 199B ET NJW 9126J Dew Domino 98S  
 NJW BW Ladysport Dew 78P ET RU 20X Boulder 57G  
 Saddle VLY Ladysport 120

DCR 713 Iconic 312 DCR Koot 713  
 DCR 312 Lacy Lou 6560 ET Red Hills Keri T85  
 THM TLS Lacey Lou 8763 Star 8006 Enyeto 163M ET  
 THM TL'S Lacey 3057



**CED BW WW YW SC MILK M&G FAT REA MARB BMI BII CHB**  
 2.1 2.5 55 91 1.3 29 57 0.001 0.52 0.05 \$301 \$365 \$113

**DCR 38 DCR 199B COWBOSS 2366**  
 BW: 78 WW: 634 YW: 1165  
 4/12/2022 PAP: 39 Dams Age: 7 REG #: 44402216

NJW 98S R117 Ribeye 88X ET SHF Rib Eye M326 R117  
 NJW 78P 88X Cowboss 199B ET NJW 9126J Dew Domino 98S  
 NJW BW Ladysport Dew 78P ET RU 20X Boulder 57G  
 Saddle VLY Ladysport 120

THR Thor 3060A THR Thor 4029  
 DCR Ann 5086 THR Misss Thor 7016T  
 Boss Ann 101W Remitall Precision 455P  
 Remtall Ann 376S



**CED BW WW YW SC MILK M&G FAT REA MARB BMI BII CHB**  
 2.2 3.8 54 87 1.3 30 57 0.001 0.46 0.08 \$333 \$400 \$111

**DCR 41 DCR 199B COWBOSS 2375**  
 BW: 74 WW: 610 YW: 1090  
 4/13/2022 PAP: 38 Dams Age: 8 REG #: 44394923

NJW 98S R117 Ribeye 88X ET SHF Rib Eye M326 R117  
 NJW 78P 88X Cowboss 199B ET NJW 9126J Dew Domino 98S  
 NJW BW Ladysport Dew 78P ET RU 20X Boulder 57G  
 Saddle VLY Ladysport 120

NJW 12E 4037 Duration 136X ET THM Durango 4037  
 DCR 136X Dom 4080 NJW 25C 1A Vaca 12E  
 DCR 3232 Dom 7035 UPS Kootenay 3232 1ET  
 DCR Lady Dom 79J 4028



**CED BW WW YW SC MILK M&G FAT REA MARB BMI BII CHB**  
 3.3 3 52 88 1.1 34 60 -0.009 0.41 0.03 \$323 \$385 \$104



**DCR 39 DCR 199B COWBOSS 2369**  
 BW: 72 WW: 716 YW: 1205  
 4/13/2022 PAP: 36 Dams Age: 4 REG #: 44394919

NJW 98S R117 Ribeye 88X ET SHF Rib Eye M326 R117  
 NJW 78P 88X Cowboss 199B ET NJW 9126J Dew Domino 98S  
 NJW BW Ladysport Dew 78P ET RU 20X Boulder 57G  
 Saddle VLY Ladysport 120

Churchill Manhattan 428B ET Churchill Sensation 028X  
 DCR 428B Manhattan Churchill Lady 002X ET  
 DCR 38Y Anchor May 6302 BP 44U Anchor 38Y  
 DCR Whisper 6055

**CED BW WW YW SC MILK M&G FAT REA MARB BMI BII CHB**  
 2.8 3 56 93 1.3 31 59 0.021 0.5 0.07 \$347 \$417 \$108



**DCR 42 DCR 199B COWBOSS 2388**  
 BW: 65 WW: 600 YW: 1105  
 4/15/2022 PAP: 38 Dams Age: 4 REG #: 44517272

NJW 98S R117 Ribeye 88X ET SHF Rib Eye M326 R117  
 NJW 78P 88X Cowboss 199B ET NJW 9126J Dew Domino 98S  
 NJW BW Ladysport Dew 78P ET RU 20X Boulder 57G  
 Saddle VLY Ladysport 120

THM Durango 4037 THM Boomer 29F  
 DCR 4037 Catalina 8214 ET THM 7085 Victra 9036  
 Remitall Catalina 64P Remitall Kootenay 9K  
 Remitall Edna 5E

**CED BW WW YW SC MILK M&G FAT REA MARB BMI BII CHB**  
 2.3 2.9 53 88 1 27 53 -0.004 0.38 -0.01 \$287 \$346 \$95

**DCR 40 DCR 199B COWBOSS 2372**  
 BW: 76 WW: 620 YW: 1145  
 4/13/2022 PAP: 38 Dams Age: 5 REG #: 44394921

NJW 98S R117 Ribeye 88X ET SHF Rib Eye M326 R117  
 NJW 78P 88X Cowboss 199B ET NJW 9126J Dew Domino 98S  
 NJW BW Ladysport Dew 78P ET RU 20X Boulder 57G  
 Saddle VLY Ladysport 120

NJW 78P 88X Cowboss 199B NJW 98S R117 Ribeye 88X ET  
 DCR 199B Dominet 7325 ET NJW BW Ladysport Dew 78P ET  
 DCR Dominet 3052 TW Hercules  
 DCR 713 Dominet 0101



**CED BW WW YW SC MILK M&G FAT REA MARB BMI BII CHB**  
 2.7 3.2 52 89 1.2 31 57 0.001 0.46 0.02 \$313 \$373 \$101

**DCR 43 DCR 199B COWBOSS 2398**  
 BW: 72 WW: 602 YW: 1135  
 4/15/2022 PAP: 39 Dams Age: 4 REG #: 44395287

NJW 98S R117 Ribeye 88X ET SHF Rib Eye M326 R117  
 NJW 78P 88X Cowboss 199B ET NJW 9126J Dew Domino 98S  
 NJW BW Ladysport Dew 78P ET RU 20X Boulder 57G  
 Saddle VLY Ladysport 120

GRNDVIEW CMR156T Visiony 509 ET CMR GVP MR Maternal 156T  
 DCR Y509 Catalina 8206 ET Remitall Ginger 23G  
 Remitall Catalina 64P Remitall Kootenay 9K  
 Remitall Edna 5E



**CED BW WW YW SC MILK M&G FAT REA MARB BMI BII CHB**  
 1.1 3 51 86 1.2 30 56 0.001 0.48 0.09 \$346 \$412 \$114

**DCR 44** **DCR 199B COWBOSS 2407**  
 BW: 72 WW: 572 YW: 1110  
 4/17/2022 PAP: 38 Dams Age: 7 REG #: 44395293

NJW 98S R117 Ribeye 88X ET SHF Rib Eye M326 R117  
 NJW 78P 88X Cowboss 199B ET NJW 9126J Dew Domino 98S  
 NJW BW Ladysport Dew 78P ET RU 20X Boulder 57G  
 Saddle VLY Ladysport 120

BP 44U Anchor 38Y Anchor 44U  
 DCR 38Y Diana 5077 K 64H Ribstone Lady 184M  
 DCR 100W Diana 3016 ET NJW 73S M326 Trust 100W ET  
 DCR Diana 7020



**CED BW WW YW SC MILK M&G FAT REA MARB BMI BII CHB**  
 4.4 3.1 53 87 1.2 29 55 0.011 0.45 0.09 \$353 \$421 \$109

**DCR 47** **DCR 199B COWBOSS 2447**  
 BW: 86 WW: 592 YW: 1015  
 4/22/2022 PAP: 38 Dams Age: 4 REG #: 44395331

NJW 98S R117 Ribeye 88X ET SHF Rib Eye M326 R117  
 NJW 78P 88X Cowboss 199B ET NJW 9126J Dew Domino 98S  
 NJW BW Ladysport Dew 78P ET RU 20X Boulder 57G  
 Saddle VLY Ladysport 120

Churchill Manhattan 428B ET Churchill Sensation 028X  
 DCR 428B Satandard 8107 Churchill Lady 002X ET  
 DCR 199B Standard 6317 NJW 78P 88X Cowboss 199B ET  
 DCR 703 Standard 2016



**CED BW WW YW SC MILK M&G FAT REA MARB BMI BII CHB**  
 -4 5.2 60 100 1.3 31 61 0.011 0.52 0 \$351 \$419 \$102  
 Horned

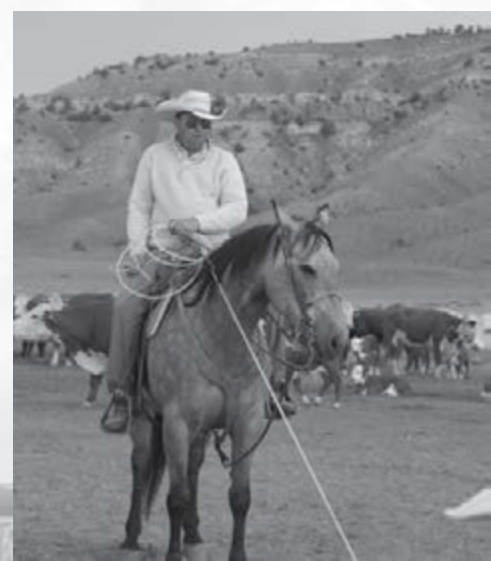


**DCR 45** **DCR 199B COWBOSS 2438**  
 BW: 82 WW: YW: 1185  
 4/22/2022 PAP: 40 Dams Age: 8 REG #: 44394316

NJW 98S R117 Ribeye 88X ET SHF Rib Eye M326 R117  
 NJW 78P 88X Cowboss 199B ET NJW 9126J Dew Domino 98S  
 NJW BW Ladysport Dew 78P ET RU 20X Boulder 57G  
 Saddle VLY Ladysport 120

TH 43P 719T Victor 453Y ET TH 122 711 Victor 719T  
 DCR 453Y Heart 4055 TH 121L 8146 Cassandra 43P  
 DCR 713 Heart 2049 DCR Koot 713  
 DH Heart Of My Heart 286

**CED BW WW YW SC MILK M&G FAT REA MARB BMI BII CHB**  
 -2.1 3.9 54 89 0.9 26 54 -0.019 0.35 -0.02 \$316 \$377 \$98



DCR Frosty Cash  
 Lot 108

**DCR 48** **DCR 199B COWBOSS 2448**  
 BW: 10 WW: 624 YW: 1105  
 4/22/2022 PAP: 39 Dams Age: 4 REG #: 44395332

NJW 98S R117 Ribeye 88X ET SHF Rib Eye M326 R117  
 NJW 78P 88X Cowboss 199B ET NJW 9126J Dew Domino 98S  
 NJW BW Ladysport Dew 78P ET RU 20X Boulder 57G  
 Saddle VLY Ladysport 120

BBSF 465Y Boyd 78B Square-D John Wayne 465Y  
 BP 78B Miss Wayne 19E BBSF 52U Racquelle 65Y  
 BP 38T Standard Lady 130A Standard 68L Dom Lad 38T  
 Ribstone 19M Lady 156T

**CED BW WW YW SC MILK M&G FAT REA MARB BMI BII CHB**  
 -7 7.9 65 109 1.3 35 67 0.001 0.45 0.02 \$334 \$408 \$108

**DCR 46** **DCR 199B COWBOSS 2441**  
 BW: 82 WW: 578 YW: 1130  
 4/22/2022 PAP: 37 Dams Age: 8 REG #: 44395323

NJW 98S R117 Ribeye 88X ET SHF Rib Eye M326 R117  
 NJW 78P 88X Cowboss 199B ET NJW 9126J Dew Domino 98S  
 NJW BW Ladysport Dew 78P ET RU 20X Boulder 57G  
 Saddle VLY Ladysport 120

TW Hercules MSU TCF Revolution 4R  
 DCR Daisy 4066 Ash Anne 52U  
 DCR 713 Daisy 2014 DCR Koot 713  
 DCR 9001 Daisy 6010



**CED BW WW YW SC MILK M&G FAT REA MARB BMI BII CHB**  
 -0.3 4.1 54 91 1 27 53 0.001 0.5 0.04 \$316 \$379 \$109

**DCR 49** **DCR 199B COWBOSS 2475**  
 BW: 75 WW: 576 YW: 1155  
 4/28/2022 PAP: 37 Dams Age: 7 REG #: 44395356

NJW 98S R117 Ribeye 88X ET SHF Rib Eye M326 R117  
 NJW 78P 88X Cowboss 199B ET NJW 9126J Dew Domino 98S  
 NJW BW Ladysport Dew 78P ET RU 20X Boulder 57G  
 Saddle VLY Ladysport 120

THR Thor 3068A THR Thor 4029  
 DCR Ella C 5060 THR Miss Thor 8015U  
 DCR 38T Ella C 011 NJW 167L Radar 38T  
 DCR 0302 Ella 8030



**CED BW WW YW SC MILK M&G FAT REA MARB BMI BII CHB**  
 3.6 2.8 50 81 1.3 28 53 0.001 0.45 0 \$311 \$368 \$99

**DCR 50** **DCR 199B COWBOSS 2492**  
 BW: 90 WW: 540 YW: 1150  
 5/3/2022 PAP: 37 Dams Age: 6 REG #: 44395369

NJW 98S R117 Ribeye 88X ET  
 NJW 78P 88X Cowboss 199B ET  
 NJW BW Ladysport Dew 78P ET

SHF Rib Eye M326 R117  
 NJW 9126J Dew Domino 98S  
 RU 20X Boulder 57G  
 Saddle VLY Ladysport 120

DCR 713 Iconic 312  
 DCR 312 Fancy 6216  
 DCR 136X Fancy 3043

DCR Koot 713  
 Red Hills Keri T85  
 NJW 12E Duration 136X ET  
 DH Fancy 763



**CED BW WW YW SC MILK M&G FAT REA MARB BMI BII CHB**  
 -5.9 6 61 100 1 29 59 -0.009 0.43 -0.02 \$315 \$382 \$101

**Reference Sire**  
**DCR 199B Slinger 7649**



NJW 98S R117 88X ET  
 NJW 78P 88X Cowboss 199B ET  
 NJW BW Ladysport Dew 78P

DCR Koot 722  
 DCR Kootenay 139X  
 DCR 0302 Wine 7032

SHF Rib Eye M326 R117  
 NJW 9126J Dew Domino 98S  
 RU 20X Boulder 57G  
 Saddle VLY Ladysport 120  
 UPS Kootenay 3232 1ET  
 DCR Dutchess 6103  
 WNH Keynote 9401 0302 ET  
 DH Rich Wine 107

**CED BW WW YW SC MILK M&G FAT REA MARB BMI BII CHB**  
 2.4 3.6 54 92 1.0 24 51 0.01 0.52 0.01 \$288 \$349 \$109

**A 199B son we used on first calf heifers. Calves came easy and had tons of vigor. Dam is a sister to the 247 bull that worked for Bar Pipe. Great cow family in a very appealing package!**



DCR 713 Kootenay 247

**DCR 51** **DCR 199B COWBOSS 2536**  
 BW: 70 WW: 638 YW: 1250  
 6/10/2022 PAP: 36 Dams Age: 5 REG #: 44395524

NJW 98S R117 Ribeye 88X ET  
 NJW 78P 88X Cowboss 199B ET  
 NJW BW Ladysport Dew 78P ET

SHF Rib Eye M326 R117  
 NJW 9126J Dew Domino 98S  
 RU 20X Boulder 57G  
 Saddle VLY Ladysport 120

BAR-RZ 980 Babe Ruth 48B  
 DCR 48B Susie 7083  
 DCR Susie 3072

CRR Helton 980  
 BAR-RZ 72S Waverly 73W  
 TW Hercules  
 Boss Susie 98W

**CED BW WW YW SC MILK M&G FAT REA MARB BMI BII CHB**  
 2.1 3.3 53 84 1.2 30 57 0.011 0.54 0.12 \$321 \$389 \$119



The kids had a very successful county fair. Grand Champion Market Steer that the girls raised. Reserve Champion Market lamb, Grand and Reserve Carcass lamb that Rylee raised and Reserve Champion Breeding Ewe.

**DCR 52** **DCR 7649 SLINGER 2027**  
 BW: 73 WW: 664 YW: 1100  
 3/8/2022 PAP: 37 Dams Age: 2 REG #: 44332893

NJW 78P 88X Cowboss 199B ET  
 DCR 199B Slinger 7649  
 DCR Kootenay 139X

Churchill Manhattan 428B ET  
 DCR 428B Miss Cal 0020  
 BP 10B Miss Cal 80E

NJW 98S R117 Ribeye 88X ET  
 NJW BW Ladysport Dew 78P ET  
 DCR Koot 722  
 DCR 0302 Wine 7032

Churchill Sensation 028X  
 Churchill Lady 002X ET  
 Hills-Galore 36T 605 Easy 10B  
 BP 24Y Ribestone Lady 36C

**CED BW WW YW SC MILK M&G FAT REA MARB BMI BII CHB**  
 1 4.1 60 99 1.1 26 54 0.021 0.49 0.02 \$332 \$402 \$105



**DCR 53** **DCR 7649 SLINGER 2063**  
 BW: 70 WW: 600 YW: 1125  
 3/19/2022 PAP: 38 Dams Age: 2 REG #: 44336873

NJW 78P 88X Cowboss 199B ET  
**DCR 199B Slinger 7649**  
 DCR Kootenay 139X

Churchill Manhattan 428B ET  
**DCR 428B Miss Kootenay 0022**  
 BP 247 Miss Kootenay 121E

NJW 98S R117 Ribeye 88X ET  
 NJW BW Ladysport Dew 78P ET  
 DCR Koot 722  
 DCR 0302 Wine 7032

Churchill Sensation 028X  
 Churchill Lady 002X ET  
 DCR 713 Kootenay 247  
 BP 265Y Stanmore Lady 180A

**CED BW WW YW SC MILK M&G FAT REA MARB BMI BII CHB**  
 3.1 2.8 55 91 1.2 26 54 0.021 0.53 0.09 \$320 \$389 \$114



**Reference Sires**

**UPS Endure 8179**



KCF Bennett Encore Z311 ET  
 NJW 79Z Z311 Endure 173D ET  
 BW 91H 100W Rita 79Z ET

UPS Spartan 0723  
 UPS Miss Spartan 4915  
 UPS Miss Neon 7734

SCHU-LAR On Target 22S  
 KCF Miss Revolution X338 ET  
 NJW 73S M326 Trust 100W ET  
 Remitall Rita 91H

DS Spartan 8008  
 UPS Miss Domino 8623  
 GH Neon 17N  
 UPS Miss Advance 4332

**CED BW WW YW SC MILK M&G FAT REA MARB BMI BII CHB**  
 4.0 4.3 59 113 0.5 26 55 0.061 0.98 0.28 \$441 \$526 \$197

**Endure's Economic Son!**

**A bull that is truly designed for the Inter-Mountain region. Progeny are moderate, stout and offer an impressive early growth curve with lots of early maturity.**



**DCR 54** **DCR 7649 SLINGER 2066**  
 BW: 75 WW: 658 YW: 1080  
 3/20/2022 PAP: 37 Dams Age: 2 REG #: 44336874

NJW 78P 88X Cowboss 199B ET  
**DCR 199B Slinger 7649**  
 DCR Kootenay 139X

Churchill Manhattan 428B ET  
**DCR 428B Ribstone 0007**  
 BP 24Y Ribstone Lady 9C

NJW 98S R117 Ribeye 88X ET  
 NJW BW Ladysport Dew 78P ET  
 DCR Koot 722  
 DCR 0302 Wine 7032

Churchill Sensation 028X  
 Churchill Lady 002X ET  
 LBH 40W Ribstone 24Y  
 BP 3S Hot Rock Dom Lady 154U

**CED BW WW YW SC MILK M&G FAT REA MARB BMI BII CHB**  
 2.3 4.2 59 97 1.1 27 56 0.031 0.43 0.11 \$310 \$383 \$110  
 Scurred

**UPS Endure 8128**



KCF Bennett Encore Z311 ET  
 NJW 79Z Z311 Endure 173D ET  
 BW 91H 100W Rita 79Z ET

R Revolution 4190  
 UPS Miss Revolution 4013  
 UPS Miss Tug 9092

SCHU-LAR On Target 22S  
 KCF Miss Revolution X338 ET  
 NJW 73S M326 Trust 100W ET  
 Remitall Rita 91H

MSU TCF Revolution 4R  
 R Miss Advance 1478  
 SHF Tug R117 T57  
 UPS Miss Domino 7776

**CED BW WW YW SC MILK M&G FAT REA MARB BMI BII CHB**  
 8.8 2.1 70 114 1.5 30 65 0.031 0.92 0.18 \$389 \$477 \$166

**Unparalleled calving ease sire, with a huge early growth curve!  
 The first 51 calves born at DCR have a birth ration of 95%. Daughters are very early maturing and have a cowy look to them.**

**DCR 55** **DCR 7649 SLINGER 2067**  
 BW: 75 WW: 606 YW: 1155  
 3/20/2022 PAP: 38 Dams Age: 2 REG #: 44395509

NJW 78P 88X Cowboss 199B ET  
**DCR 199B Slinger 7649**  
 DCR Kootenay 139X

Churchill Manhattan 428B ET  
**DCR HD 428B Sweet Wine 0541**  
 DCR HD 199B Sweet Wine 6004

NJW 98S R117 Ribeye 88X ET  
 NJW BW Ladysport Dew 78P ET  
 DCR Koot 722  
 DCR 0302 Wine 7032

Churchill Sensation 028X  
 Churchill Lady 002X ET  
 NJW 78P 88X Cowboss 199B ET  
 DCR 638 Sweet Wine 134X

**CED BW WW YW SC MILK M&G FAT REA MARB BMI BII CHB**  
 3.4 2.9 56 91 1.1 27 55 0.011 0.53 0.04 \$311 \$377 \$107  
 Dehorned





**DCR 56** **DCR 8128 ENDURE 2600**  
 BW: 68 WW: 590 YW: 1150  
 4/23/2022 PAP: 39 Dams Age: 3 REG #: 44516073

NJW 79Z Z311 Endure 173D ET  
 UPS Endure 8128  
 UPS Miss Revolution 4013

KCF Bennett Encore Z311 ET  
 BW 91H 100W Rita 79Z ET  
 R Revolution 4190  
 UPS Miss Tug 9092

DCR 136X Dependable 376  
 DCR 376 Ella 9206 ET  
 DCR 199B Ella 6358 ET

NJW 12E 4037 Duration 136X ET  
 DCR 7006 Miss Daisy 9037  
 NJW 78P 88X Cowboss 199B ET  
 DCR 722 Ella C 0119

**CED BW WW YW SC MILK M&G FAT REA MARB BMI BII CHB**  
 4.4 2.5 60 98 1 31 61 0.016 0.75 0.14 \$379 \$456 \$140

Horned  
 Owned with Whispering Wind Farms

DCR 376 Ella 9206 ET  
 Dam of Lot 56



**DCR 59** **DCR 8179 ENDURE 2553**  
 BW: 78 WW: 694 YW: 1225  
 4/2/2022 PAP: 35 Dams Age: 7 REG #: 44514058

NJW 79Z Z311 Endure 173D ET  
 UPS Endure 8179  
 UPS Miss Spartan 4915

KCF Bennett Encore Z311 ET  
 BW 91H 100W Rita 79Z ET  
 UPS Spartan 0723  
 UPS Miss Neon 7734

BP 44U Anchor 38Y  
 DCR 38Y Standard 5072  
 DCR 57X Standard 3085

Anchor 44U  
 K 64H Ribstone Lady 184M  
 DCR 713 Kootenay 57X  
 DCR 3232 Standard 7018

**CED BW WW YW SC MILK M&G FAT REA MARB BMI BII CHB**  
 1.4 4 52 96 0.7 21 47 0.046 0.6 0.2 \$357 \$430 \$150



**DCR 57** **DCR 8128 ENDURE 2148**  
 BW: 75 WW: 696 YW: 1080  
 3/28/2022 PAP: 37 Dams Age: 4 REG #: 44520552

NJW 79Z Z311 Endure 173D ET  
 UPS Endure 8179  
 UPS Miss Spartan 4915

KCF Bennett Encore Z311 ET  
 BW 91H 100W Rita 79Z ET  
 UPS Spartan 0723  
 UPS Miss Neon 7734

BAR-RZ Babe Ruth 48B  
 DCR DVB 48B Lady Image 8205  
 DCR Lady Image 5073

CRR Helton 980  
 BAR-RZ 72S Waverly 73W  
 THR Thor 3060A  
 DCR 713 Image 2005

**CED BW WW YW SC MILK M&G FAT REA MARB BMI BII CHB**  
 2.3 4.0 57 98 0.8 24 52 0.046 0.75 0.22 \$362 \$440 \$160

Horned



**DCR 60** **DCR 8179 ENDURE 2554**  
 BW: 75 WW: 688 YW: 1105  
 3/31/2022 PAP: 37 Dams Age: 6 REG #: 44514060

NJW 79Z Z311 Endure 173D ET  
 UPS Endure 8179  
 UPS Miss Spartan 4915

KCF Bennett Encore Z311 ET  
 BW 91H 100W Rita 79Z ET  
 UPS Spartan 0723  
 UPS Miss Neon 7734

NJW 78P 88X Cowboss 199B  
 DCR 199B Sunny 6271  
 DCR 3232 Dom 7019

NJW 98S R117 Ribeye 88X ET  
 NJW BW Ladysport Dew 78P ET  
 UPS Kootenay 3232 1ET  
 Sun MS L1 Dom 58L

**CED BW WW YW SC MILK M&G FAT REA MARB BMI BII CHB**  
 3.3 3.1 51 94 0.8 26 51 0.021 0.75 0.19 \$370 \$440 \$158

**DCR 58** **DCR 8179 ENDURE 2550**  
 BW: 70 WW: 622 YW: 1090  
 3/15/2022 PAP: 36 Dams Age: 9 REG #: 44514057

NJW 79Z Z311 Endure 173D ET  
 UPS Endure 8179  
 UPS Miss Spartan 4915

KCF Bennett Encore Z311 ET  
 BW 91H 100W Rita 79Z ET  
 UPS Spartan 0723  
 UPS Miss Neon 7734

DCR Koot 713  
 DCR 713 Tara 3008  
 DH Tara Tradition 278

UPS Kootenay 3232 1ET  
 DH Sweet Honesty 128  
 BAR JZ Tradition 938H  
 DH Tara Wood 309

**CED BW WW YW SC MILK M&G FAT REA MARB BMI BII CHB**  
 4.1 3.1 52 98 0.6 20 46 0.031 0.66 0.17 \$343 \$416 \$153



**DCR 61** **DCR 8179 ENDURE 2555**  
 BW: 78 WW: 575 YW: 1005  
 4/5/2022 PAP: 38 Dams Age: 5 REG #: 44514062

NJW 79Z Z311 Endure 173D ET  
 UPS Endure 8179  
 UPS Miss Spartan 4915

KCF Bennett Encore Z311 ET  
 BW 91H 100W Rita 79Z ET  
 UPS Spartan 0723  
 UPS Miss Neon 7734

BAR-RZ 980 Babe Ruth 48B  
 DCR 48B Red Rose 7043  
 DCR 713 Red Rose 2010

CRR Helton 980  
 BAR-RZ 72S Waverly 73W  
 DCR Koot 713  
 DCR 14K Red Rose 8016

**CED BW WW YW SC MILK M&G FAT REA MARB BMI BII CHB**  
 2.1 4.1 57 100 0.8 23 52 0.036 0.77 0.21 \$349 \$425 \$161



**DCR 62 DCR 8179 ENDURE 2556**  
 BW: 82 WW: 692 YW: 1225  
 4/5/2022 PAP: 42 Dams Age: 4 REG #: 44514063

NJW 79Z Z311 Endure 173D ET  
**UPS Endure 8179**  
 UPS Miss Spartan 4915

KCF Bennett Encore Z311 ET  
 BW 91H 100W Rita 79Z ET  
 UPS Spartan 0723  
 UPS Miss Neon 7734

DCR 428B Manhattan 6009  
**DCR DVB 6009 Pearl 8103**  
 DCR Y509 Pearl 6211

Churchill Manhattan 428B  
 DCR 38Y Ella C 4085  
 GRNDVIEW CMR156T VisionY 509 ET  
 DCR 453Y Pearl 3112

**CED BW WW YW SC MILK M&G FAT REA MARB BMI BII CHB**  
 3.3 3.2 59 102 1 30 59 0.041 0.72 0.24 \$388 \$472 \$160



**DCR 65 DCR 8179 ENDURE 2401**  
 BW: 76 WW: 736 YW: 1185  
 3/20/2022 PAP: 37 Dams Age: 4 REG #: 44520553

NJW 79Z Z311 Endure 173D ET  
**UPS Endure 8179**  
 UPS Miss Spartan 4915

KCF Bennett Encore Z311 ET  
 BW 91H 100W Rita 79Z ET  
 UPS Spartan 0723  
 UPS Miss Neon 7734

DCR 713 International 301  
**DCR DVB Fasanation 8058**  
 DCR 453Y Fasanation 5026

DCR Koot 713  
 DCR 7006 Ella 9014  
 TH 43P 719T Victor 453Y ET  
 DCR 722 Ella C 0119

**CED BW WW YW SC MILK M&G FAT REA MARB BMI BII CHB**  
 1.5 3.7 54 96 0.7 22 49 0.041 0.64 0.15 \$344 \$415 \$146  
 Horned



**DCR 63 DCR 8179 ENDURE 2558**  
 BW: 83 WW: 610 YW: 1010  
 4/6/2022 PAP: 37 Dams Age: 7 REG #: 44514065

NJW 79Z Z311 Endure 173D ET  
**UPS Endure 8179**  
 UPS Miss Spartan 4915

KCF Bennett Encore Z311 ET  
 BW 91H 100W Rita 79Z ET  
 UPS Spartan 0723  
 UPS Miss Neon 7734

THR Thor 3060A  
**DCR Lady Image 5073**  
 DCR 713 Image 2005

THR Thor 4029  
 THR Miss Thor 7016T  
 DCR Koot 713  
 DH Prospect Image 771

**CED BW WW YW SC MILK M&G FAT REA MARB BMI BII CHB**  
 4.2 2.9 50 90 0.8 21 47 0.041 0.62 0.22 \$354 \$427 \$156



**DCR 66 DCR 8179 Endure 2562**  
 BW: 76 WW: 654 YW: 1250  
 4/18/2022 PAP: 39 Dams Age: 3 REG #: 44520554

NJW 79Z Z311 Endure 173D ET  
**UPS Endure 8179**  
 UPS Miss Spartan 4915

KCF Bennett Encore Z311 ET  
 BW 91H 100W Rita 79Z ET  
 UPS Spartan 0723  
 UPS Miss Neon 7734

DCR 199B Cowboss 6072  
**DCR DVB 6072 Dom 9422**  
 DCR Dom 5054

NJW 78P 88X Cowboss 199B ET  
 Red Hills Keri T85  
 THR Thor 3060A  
 DCR 16 Dom 6049

**CED BW WW YW SC MILK M&G FAT REA MARB BMI BII CHB**  
 1.3 3.9 51 88 0.8 22 48 0.031 0.67 0.16 \$381 \$450 \$153

**DCR 64 DCR 8179 ENDURE 2560**  
 BW: 75 WW: 680 YW: 1225  
 3/31/2022 PAP: 36 Dams Age: 4 REG #: 44520551

NJW 79Z Z311 Endure 173D ET  
**UPS Endure 8179**  
 UPS Miss Spartan 4915

NJW 73S M326 Trust 100W ET  
 BW 91H 100W Rita 79Z ET  
 UPS Spartan 0723  
 UPS Miss Neon 7734

DCR 200Z Precedence 518 ET  
**DCR DVB 518 Taylormade 8316**  
 DCR 3060 Taylormade 5046

Churchill Red Bull 200Z  
 Red Hills Keri T85  
 THR Thor 3060A  
 Heritage Taylormade 1003ET

**CED BW WW YW SC MILK M&G FAT REA MARB BMI BII CHB**  
 2.8 3.8 54 96 1.0 27 54 0.036 0.68 0.2 \$403 \$480 \$156  
 Scurred



**Madi Shults**  
 Sr. Territory Representative  
 Merck Animal Health  
 (970) 208-5545

**Nasalgen<sup>3</sup>-PMH**  
 The *first and only* intranasal vaccine with both viral and bacterial pneumonia protection.

Bovine Rhinotracheitis-Parainfluenza 3-Respiratory Syncytial Virus-Mannheimia Haemolytica-Pasteurella Multocida Vaccine

Copyright © 2021 Intervet Inc., d/b/a/ Merck Animal Health, a subsidiary of Merck & Co., Inc. All rights reserved.

**We would like to thank Madi and everyone from Merck for supplying breakfast the morning of the bull sale!**

**Reference Sire**

# 74LC CVL DCR Ambition 9217 ET



KCF Bennett Encore 173D ET  
 NJW 79Z Z311 Endure 173D ET  
 BW 91H 100W Rita 79Z ET

NJW 73S W18 Hometown 10Y ET SHF Wonder M326 W18 ET  
 RRR 151U 10Y Uintah 5204 ET NJW P606 72N Daydream 73S  
 STAR KKH MKS Prissy Kay 137 ET Remitall Online 122L  
 STAR KKH MKS Prissy Kay 137M ET

SCHU-LAR ON Target 22S  
 KCF Miss Revolution X338 ET  
 NJW 73S M326 Trust 100W ET  
 Remitall Rita 91H

**DCR 68** BW: 87 WW: 612 YW: 1160  
 4/1/2022 PAP: 37 Dams Age: 5 REG #: 44518529

**DCR 68** BW: 87 WW: 612 YW: 1160  
 4/1/2022 PAP: 37 Dams Age: 5 REG #: 44518529

NJW 79Z Z311 Endure 173D ET  
 74LC CVL DCR Ambition 9217 ET  
 RRR 151U 10Y Unitah 5204 ET

DCR 200Z Precedence 518 ET  
 DCR 518 Susie 7316 ET  
 DCR Susie 3072

KCF Bennett Encore Z311 ET  
 BW 91H 100W Rita 79Z ET  
 NJW 73S W18 Hometown 10Y ET  
 Star KKH Okaboji 151U ET

Churchill Red Bull 200Z  
 Red Hills Keri T85  
 TW Hercules  
 Boss Susie 98W

**DCR 69** BW: 80 WW: 655 YW: 1140  
 4/4/2022 PAP: 38 Dams Age: 4 REG #: 44394665

**DCR 69** BW: 80 WW: 655 YW: 1140  
 4/4/2022 PAP: 38 Dams Age: 4 REG #: 44394665



NJW 79Z Z311 Endure 173D ET  
 74LC CVL DCR Ambition 9217 ET  
 RRR 151U 10Y Unitah 5204 ET

JDH TS 20W Cracker Jack 23A ET  
 BP 23A Miss Cracker Jack 42D  
 BP 124P Ribstone Lady 182U

KCF Bennett Encore Z311 ET  
 BW 91H 100W Rita 79Z ET  
 NJW 73S W18 Hometown 10Y ET  
 Star KKH Okaboji 151U ET

AH JDH Cracker Jack 26U ET  
 JDH MS 15T Wrangler 20W ET  
 K 117K Ribstone Lad 124P  
 K 68L Standard Lady 72R

**DCR 70** BW: 74 WW: 670 YW: 1155  
 4/10/2022 PAP: 36 Dams Age: 6 REG #: 44394893

**DCR 70** BW: 74 WW: 670 YW: 1155  
 4/10/2022 PAP: 36 Dams Age: 6 REG #: 44394893

NJW 79Z Z311 Endure 173D ET  
 74LC CVL DCR Ambition 9217 ET  
 RRR 151U 10Y Unitah 5204 ET

JB 354 Anchor Cadet  
 BP 725Y Cadet Lady 110B  
 Ribstone 124P Lass 29T

KCF Bennett Encore Z311 ET  
 BW 91H 100W Rita 79Z ET  
 NJW 73S W18 Hometown 10Y ET  
 Star KKH Okaboji 151U ET

Anchor 49R  
 JB 488 Neda Herman 354M  
 K 117K Ribstone Lad 124P  
 K 45D Super Lady 75L

**DCR 70** BW: 74 WW: 670 YW: 1155  
 4/10/2022 PAP: 36 Dams Age: 6 REG #: 44394893



**DCR 67** BW: 100 WW: 636 YW: 1190  
 3/28/2022 PAP: 40 Dams Age: 4 REG #: 44394493

NJW 79Z Z311 Endure 173D ET  
 74LC CVL DCR Ambition 9217 ET  
 RRR 151U 10Y Unitah 5204 ET

DCR 136X Dependable 376  
 DCR HD 376 Vicki 801  
 DCR HD 136X Vicki 4070

KCF Bennett Encore Z311 ET  
 BW 91H 100W Rita 79Z ET  
 NJW 73S W18 Hometown 10Y ET  
 Star KKH Okaboji 151U ET

NJW 12E 4037 Duration 136X ET  
 DCR 7006 Miss Daisy 9037  
 NJW 12E Duration 136X ET  
 DCR 7006 Vicki 0102

**DCR 67** BW: 100 WW: 636 YW: 1190  
 3/28/2022 PAP: 40 Dams Age: 4 REG #: 44394493



**DCR 71 DCR 9217 FOUNDATION 2494**  
 BW: 68 WW: 600 YW: 1260  
 6/10/2022 PAP: 36 Dams Age: 10 REG #: 44080154

NJW 79Z Z311 Endure 173D ET  
**74LC CVL DCR Ambition 9217 ET**  
 RRR 151U 10Y Unitah 5204 ET

KCF Bennett Encore Z311 ET  
 BW 91H 100W Rita 79Z ET  
 NJW 73S W18 Hometown 10Y ET  
 Star KKH Okaboji 151U ET

TW Hercules  
**DCR Sweer Honesty 2058**  
 DCR 14K Sweet Scarlet 8020

MSU TCF Revolution 4R  
 Ash Anne 52U  
 SB Boomer 14K  
 DH Sweet Honesty 128

**CED BW WW YW SC MILK M&G FAT REA MARB BMI BII CHB**  
 3.2 3.4 59 95 1.2 27 56 0.036 0.59 0.15 \$392 \$471 \$130



**DCR 74 DCR 9217 AMBITION 2408**  
 BW: 88 WW: 674 YW: 1255  
 4/18/2022 PAP: 38 Dams Age: 7 REG #: 444395294

NJW 79Z Z311 Endure 173D ET  
**74LC CVL DCR Ambition 9217 ET**  
 RRR 151U 10Y Unitah 5204 ET

KCF Bennett Encore Z311 ET  
 BW 91H 100W Rita 79Z ET  
 NJW 73S W18 Hometown 10Y ET  
 Star KKH Okaboji 151U ET

LBH 20J Stanmore ET 265Y  
**BP 265Y Stanm Ore Lady 180A**  
 BP 124P Ribstone Lady 182U

AGA 121G Stanmore 20J  
 LBH 87M Miss Diamond 20S  
 K 117K Ribstone Lad 124P  
 K 68L Standard Lady 72R

**CED BW WW YW SC MILK M&G FAT REA MARB BMI BII CHB**  
 -1.5 6.4 61 102 1.3 28 58 0.021 0.47 0.2 \$394 \$478 \$142



**DCR 72 DCR 9217 AMBITION 2380**  
 BW: 80 WW: 622 YW: 1085  
 4/14/2022 PAP: 38 Dams Age: 6 REG #: 44394928

NJW 79Z Z311 Endure 173D ET  
**74LC CVL DCR Ambition 9217 ET**  
 RRR 151U 10Y Unitah 5204 ET

KCF Bennett Encore Z311 ET  
 BW 91H 100W Rita 79Z ET  
 NJW 73S W18 Hometown 10Y ET  
 Star KKH Okaboji 151U ET

LBH 40W Ribstone 24Y  
**BP 24Y Ribstone Lady 33B**  
 BP 38T Standard Lady 27X

LBH 157K Ribstone 40W  
 LBH 268P Miss Standard 270T  
 Standard 68L Dom Lad 38T  
 K 28L Reform Lady 202R

**CED BW WW YW SC MILK M&G FAT REA MARB BMI BII CHB**  
 1.4 5.6 61 96 1.4 29 60 0.031 0.41 0.14 \$383 \$464 \$125



DANA DCR 199B Ontime 8166ET  
 Dam of Lot 75

**DCR 75 DCR 9217 AMBITION 2418**  
 BW: 72 WW: 600 YW: 1245  
 4/15/2022 PAP: 38 Dams Age: 4 REG #: 44514856

NJW 79Z Z311 Endure 173D ET  
**74LC CVL DCR Ambition 9217 ET**  
 RRR 151U 10Y Unitah 5204 ET

KCF Bennett Encore Z311 ET  
 BW 91H 100W Rita 79Z ET  
 NJW 73S W18 Hometown 10Y ET  
 Star KKH Okaboji 151U ET

NJW 78P 88X Cowboss 199B  
**DANA DCR 199B Ontime 8166ET**  
 MGM Boom Ontime 741

NJW 98S R117 Ribeye 88X ET  
 NJW BW Ladysport Dew 78P ET  
 VPI Limited Edition J921  
 MGM Boomete 730

**CED BW WW YW SC MILK M&G FAT REA MARB BMI BII CHB**  
 3.6 3.5 63 104 1.2 31 63 0.031 0.6 0.16 \$388 \$471 \$138

**DCR 73 DCR 9217 AMBITION 2394**  
 BW: 68 WW: 610 YW: 1215  
 4/15/2022 PAP: 36 Dams Age: 4 REG #: 44513746

NJW 79Z Z311 Endure 173D ET  
**74LC CVL DCR Ambition 9217 ET**  
 RRR 151U 10Y Unitah 5204 ET

KCF Bennett Encore Z311 ET  
 BW 91H 100W Rita 79Z ET  
 NJW 73S W18 Hometown 10Y ET  
 Star KKH Okaboji 151U ET

DCR 713 Kootenay 247  
**bp 247 Miss Kootenay 21E**  
 BP 144P Standard Lady 46A

DCR Koot 713  
 DCR 0302 Wine 7032  
 k 68L Standard Lad 144P  
 Ribstone 124P Lass 29T

**CED BW WW YW SC MILK M&G FAT REA MARB BMI BII CHB**  
 0.6 4.9 59 94 1.4 23 52 0.026 0.51 0.07 \$343 \$415 \$122

Scurred



**DCR 76 DCR HD 9217 AMBITION 2478**  
 BW: 80 WW: 650 YW: 1180  
 4/29/2022 PAP: 36 Dams Age: 6 REG #: 44203050

NJW 79Z Z311 Endure 173D ET  
**74LC CVL DCR Ambition 9217 ET**  
 RRR 151U 10Y Unitah 5204 ET

KCF Bennett Encore Z311 ET  
 BW 91H 100W Rita 79Z ET  
 NJW 73S W18 Hometown 10Y ET  
 Star KKH Okaboji 151U ET

NJW 78P 88X Cowboss 199B  
**DCR HD 199B Vicki 901**  
 DCR HD 428B Vicki 6203

NJW 98S R117 Ribeye 88X ET  
 NJW BW Ladysport Dew 78P ET  
 Churchill Manhattan 428B ET  
 DCR HD 136X Vicki 4070

**CED BW WW YW SC MILK M&G FAT REA MARB BMI BII CHB**  
 0.5 4.4 64 105 1.5 33 65 0.021 0.67 0.11 \$414 \$495 \$133



# Reference Sire DCR 200Z Precedence 518 ET



Churchill Sensation 028X  
Churchill Red Bull 200Z  
Churchill Lady 002X ET

Remitall Partiot ET 13P  
Red Hills Keri T85  
Link Am Governess 922J

UPS Domino 3027  
Churchill Lady 7202T ET  
Golden Oak Outcross 18U  
Churchill Lady 600S ET

Remitall Olympian ET 262L  
Remitall Ginger 23G  
Remitall Governor 236G  
SHF Miss Keynot 20X D18

**DCR 78** **DCR 518 PRECEDENCE 2557**  
BW: 63 WW: 692 YW: 1175  
4/5/2022 PAP: 39 Dams Age: 6 REG #: 44514050

Churchill Red Bull 200Z  
DCR 200Z Precedence 518 ET  
Red Hills Keri T85

NJW 78P 88X Cowboss 199B  
DCR 199B Sunny 6270  
DCR Sunny 2002

Churchill Sensation 028X  
Churchill Lady 002X ET  
Remitall Patriot ET 13P  
Link Am Governess 922J

NJW 98S R117 Ribeye 88X ET  
NJW BW Ladysport Dew 78P ET  
TW Hercules  
DCR 7006 Dom 9023

**CED BW WW YW SC MILK M&G FAT REA MARB BMI BII CHB**  
1.8 2.8 51 86 1.5 31 56 -0.014 0.41 0.14 \$388 \$458 \$126  
Scurred



**CED BW WW YW SC MILK M&G FAT REA MARB BMI BII CHB**  
0.9 2.9 50 87 **1.7** 32 57 **-0.029** 0.38 0.15 \$415 \$485 **\$133**

**7 Trait Leader!**

**518 was the high seller from our 2017 sale. He sires as close to perfect udder as you will find. Make baldy females with his sons and you will love them.**

**DCR 77** **DCR 518 PRECEDENCE 2552**  
BW: 70 WW: 634 YW: 1020  
4/1/2022 PAP: 37 Dams Age: 6 REG #: 44514028

Churchill Red Bull 200Z  
DCR 200Z Precedence 518 ET  
Red Hills Keri T85

DCR 100W Trusted 320 ET  
DCR Standard 5036  
DCR 38T Standard 022

Churchill Sensation 028X  
Churchill Lady 002X ET  
Remitall Patriot ET 13P  
Link Am Governess 922J

NJW 73S M326 Trust 100W ET  
DCR Diana 7020  
NJW 167L Radar 38T  
DCR 3232 Standard 8027

**CED BW WW YW SC MILK M&G FAT REA MARB BMI BII CHB**  
0.6 2.9 51 85 1.4 27 53 -0.009 0.45 0.11 \$364 \$431 \$127  
Scurred



**DCR 79** **DCR 518 PRECEDENCE 2559**  
BW: 65 WW: 574 YW: 1090  
4/10/2022 PAP: 36 Dams Age: 6 REG #: 44514855

Churchill Red Bull 200Z  
DCR 200Z Precedence 518 ET  
Red Hills Keri T85

GRNDVIEW CMR 156T Vision509 ET  
DCR Y509 Pearl 6211  
DCR 453Y Pearl 3112

Churchill Sensation 028X  
Churchill Lady 002X ET  
Remitall Patriot ET 13P  
Link Am Governess 922J

CMR GVP MR Maternal 156T  
Remitall Ginger 23G  
TH 43P 719T Victor 453Y ET  
DCR 347 Pearl 6016

**CED BW WW YW SC MILK M&G FAT REA MARB BMI BII CHB**  
-0.3 2.9 49 81 1.5 32 57 -0.004 0.38 0.14 \$394 \$463 \$123

**DCR 80** **DCR 518 PRECEDENCE 2561**  
BW: 68 WW: 530 YW: 1050  
4/14/2022 PAP: 41 Dams Age: 7 REG #: 44516039

Churchill Red Bull 200Z  
DCR 200Z Precedence 518 ET  
Red Hills Keri T85

DCR 136X Dependable 376  
DCR Paulina 5067  
DCR 3019 Pauline 6051

Churchill Sensation 028X  
Churchill Lady 002X ET  
Remitall Patriot ET 13P  
Link Am Governess 922J

NJW 12E 4037 Duration 136X ET  
DCR 7006 Miss Daisy 9037  
UPS Kootenay 3232 1ET  
DCR Pauline 28K 3019

**CED BW WW YW SC MILK M&G FAT REA MARB BMI BII CHB**  
0.6 3 47 82 1.3 28 51 0.001 0.33 0.14 \$358 \$424 \$123



# Reference Sire Churchill Manhattan 428B



UPS Domino 3027  
Churchill Sensation 028X  
Churchill Lady 7202T ET

Golden Oak Outcross 18U  
Churchill Lady 002X ET  
Churchill Lady 600S ET

CL Domino 9126J 1ET  
UPS Miss Diamond 1353  
GH 2799R

CL1 Dominette 301N

Golden-Oak Fusion 3S  
Golden-Oak Outcross 18U  
BR Moler ET  
Chruchill Lady 989

CED	BW	WW	YW	SC	MILK	M&G	FAT	REA	MARB	BMI	BII	CHB
6.8	1.0	66	99	1.5	34	68	0.071	0.62	0.14	\$437	\$526	\$118

**8 trait leader!**

We brought the old man out of retirement to breed to one more set of heifers. After over 1700 births from first calf heifers we have assisted less than 1%. The same calves wean in the top 30% of their contemporary groups. Daughters in production are very easy fleshing and as 2's, 98% breed back in a 45 day window! Simple Economics

## DCR 428B Manhattan 0018



Churchill Sensation 028X  
Churchill Manhattan 428B ET  
Churchill Lady 002X ET

Anchor 44U  
BP 44U Anchor Lady 17B  
BP 144P Standard Lady 163U

UPS Domino 3027  
Churchill Lady 7202T ET  
Golden Oak Outcross 18U  
Churchill Lady 600S ET

Anchor 49R  
Anchor 5M  
K 68L Standard Lad 144P  
K 64H Ribstone Lady 152L

CED	BW	WW	YW	SC	MILK	M&G	FAT	REA	MARB	BMI	BII	CHB
7.6	1.7	65	105	1.3	29	62	0.031	0.28	0.10	\$406	\$490	\$119

**The Cowmans bull!**

Study his numbers, 0018 covers all the corners. As live data starts rolling on calves the numbers are proving to be accurate! First calves averaged 75 lbs at birth, 4 lbs lighter than angus sired contemporaries. At weaning the steer calves sired by him out weighed their contemporaries by 25 lbs and heifer calves by 15 lbs. Just real world data from a good set of commercial red angus cows!

DCR	DCR 0018 UNIQUE 2199		
81	BW: 69	WW: 650	YW: 1060
4/30/2022	PAP: 39	Dams Age: 2	REG #: 44377151

Churchill Manhattan 428B  
DCR 428B Manhattan 0018  
BP 44U Anchor Lady 17B

DCR 100W Trusted 320 ET  
DCR 320 Diana 0043 ET  
DCR HD 199B Tara 7054

Churchill Sensation 028X  
Churchill Lady 002X ET  
Anchor 44U  
BP 144P Standard Lady 163U

NJW 73S M326 Trust 100W ET  
DCR Diana 7020  
NJW 78P 88X Cowboss 199B ET  
DCR 722 Tara 128X



CED	BW	WW	YW	SC	MILK	M&G	FAT	REA	MARB	BMI	BII	CHB
3.1	3.1	60	94	1.5	22	52	0.011	0.39	0.3	\$361	\$450	\$124

A Manhattan 0018 son that we couldn't be prouder of. Aptly named, Unique 2199 is definitely a unique individual. A moderate frame bull, that offers the same length of hip, and confident presence that his sire carries, combined with a head and front end that is sure to be a heifer bull buyer favorite. All the while maintaining the substance, that will sire tremendous females and steers that will bring the buyers back year after year. Check out his birth to weaning performance! Born unassisted to a 17 month old female.



DCR	DCR 0018 MANHATTAN 2209		
82	BW: 72	WW: 716	YW: 1275
3/22/2022	PAP: 36	Dams Age: 2	REG #: 44394458

Churchill Manhattan 428B  
DCR 428B Manhattan 0018  
BP 44U Anchor Lady 17B

Churchill Manhattan 428B ET  
DCR 428B Leslie 0644  
DCR 199B Leslie 7064

Churchill Sensation 028X  
Churchill Lady 002X ET  
Anchor 44U  
BP 144P Standard Lady 163U

Churchill Sensation 028X  
Churchill Lady 002X ET  
NJW 78P 88X Cowboss 199B ET  
DCR 38Y Leslie 4086



CED	BW	WW	YW	SC	MILK	M&G	FAT	REA	MARB	BMI	BII	CHB
6.8	2.1	66	104	1.4	34	67	0.041	0.42	0.13	\$411	\$498	\$109

Manhattan 0018 is one of the next cornerstone herd sires here at DCR, and Lot 82 is a perfect example of what you can expect in the future. Some of the most attractive cattle you'll see. Keenly built, tremendous length and frame, while maintaining above average depth and substance, wrapped together in a confident county covering walk. Use this bull in any facet of any program, not only is his EPD set one of the most balanced in the sale but phenotypically, he is built to deliver.

**DCR 83 DCR 428B MANHATTAN 2026**  
 BW: 70 WW: 574 YW: 1020  
 3/10/2022 PAP: 38 Dams Age: 2 REG #: 44503019

Churchill Sensation 028X  
**Churchill Manhattan 428B ET**  
 Churchill Lady 002X ET

UPS Domino 3027  
 Churchill Lady 7202T ET  
 Golden Oak Outcross 18U  
 Churchill Lady 600S

NJW 78P 88X Cowboss 199B  
**DCR 199B Leslie 0221**  
 DCR 38Y Leslie 4086

NJW 98S R117 Ribeye 88X ET  
 NJW BW Ladysport Dew 78P ET  
 BP 44U Anchor 38Y  
 DCR 38T Leslie 1059

**CED BW WW YW SC MILK M&G FAT REA MARB BMI BII CHB**  
 5.7 1.7 57 89 1.3 31 60 0.041 0.48 0.1 \$387 \$462 \$110



**DCR 86 DCR 428B MANHATTAN 2058**  
 BW: 69 WW: 600 YW: 1075  
 3/18/2022 PAP: 37 Dams Age: 2 REG #: 44336870

Churchill Sensation 028X  
**Churchill Manhattan 428B ET**  
 Churchill Lady 002X ET

UPS Domino 3027  
 Churchill Lady 7202T ET  
 Golden Oak Outcross 18U  
 Churchill Lady 600S

NJW 78P 88X Cowboss 199B  
**DCR 199B Anchor May 0230**  
 DCR 38Y Anchor May 6302

NJW 98S R117 Ribeye 88X ET  
 NJW BW Ladysport Dew 78P ET  
 BP 44U Anchor 38Y  
 DCR Wisper 6055

**CED BW WW YW SC MILK M&G FAT REA MARB BMI BII CHB**  
 4.7 2 59 92 1.3 31 60 0.041 0.52 0.12 \$377 \$454 \$114  
 Horned



**DCR 84 DCR 428B MANHATTAN 2050**  
 BW: 70 WW: YW: 1065  
 3/16/2022 PAP: 38 Dams Age: 2 REG #: 44345743

Churchill Sensation 028X  
**Churchill Manhattan 428B ET**  
 Churchill Lady 002X ET

UPS Domino 3027  
 Churchill Lady 7202T ET  
 Golden Oak Outcross 18U  
 Churchill Lady 600S

Churchill Manhattan 428B ET  
**DCR 428B Miss Kootenay 0076**  
 BP 115C Miss Kootenay 65E

Churchill Sensation 028X  
 Churchill Lady 002X ET  
 BP 247 Kootenay 115C  
 BP 23A Miss Cracker Jack 113C

**CED BW WW YW SC MILK M&G FAT REA MARB BMI BII CHB**  
 3.5 2.6 58 94 1.2 21 50 0.31 0.37 0.08 \$303 \$374 \$113

**DCR 85 DCR 428B MANHATTAN 2062**  
 BW: 72 WW: 564 YW: 1075  
 3/19/2022 PAP: 38 Dams Age: 2 REG #: 44336871

Churchill Sensation 028X  
**Churchill Manhattan 428B ET**  
 Churchill Lady 002X ET

UPS Domino 3027  
 Churchill Lady 7202T ET  
 Golden Oak Outcross 18U  
 Churchill Lady 600S

NJW 78P 88X Cowboss 199B  
**DCR 199B Vicki 0249**  
 DCR 428B Babe Ruth 6205

NJW 98S R117 Ribeye 88X ET  
 NJW BW Ladysport Dew 78P ET  
 BAR-RZ 980 Babe Ruth 48B  
 DCR 44X Vicki 3084

**CED BW WW YW SC MILK M&G FAT REA MARB BMI BII CHB**  
 3.3 2.6 61 95 1.4 32 62 0.031 0.59 0.1 \$363 \$439 \$116



The promise behind every DCR cow-

**NO FRILLS** – Cattle run on native grasses in commercial setting on the high desert.

**NO GIMMICKS** – Cows calve in large pastures (3,000 acres) and do it by themselves or they are eliminated by nature or management.

**NO EXCUSES** – Entire cow families have been eliminated for prolapse, eye, udder, feet and leg or fleshing ability problems for 40 years.

**NO SECOND CHANCES** – Every cow raises a calf, every year, period.

It's Not a Gimmick, Its a Way of Life!

**Reference Sire**

# DCR 301 International 8175 ET



DCR Koot 713  
DCR 713 International 301  
DCR 7006 Ella 9014

Star 8006 Enyeto 163M ET  
THM TLS Lacey Lou 8763  
THM TL'S Lacey 3057 ET

UPS Kootenay 3232 1ET  
DH Sweet Honesty 128  
K&B Red Felton 7006T  
DCR 14K Pauline 4001

H 8E Embracer 8006  
Star Rockin Erica 38F  
Remital Keynote 20X  
THM Victra Dom 152 5043

**CED BW WW YW SC MILK M&G FAT REA MARB BMI BII CHB**  
-3.8 4.2 49 82 1.6 22 46 0.011 0.28 -0.09 \$337 \$390 \$101

**Powerfully Constructed, Economically Driven!**

**Big footed, heavy boned and lots of lower quarter, 8175 is powerful from every angle. His progeny offer as much fleshing ability as any cattle in the breed. The Koot 713 cattle have always worked well in the lot and on the rail.**



DCR Koot 713  
Grand Sire of DCR 301 International 8175 ET

THM TLS Lacey Lou 8763  
Dam of DCR 301 International 8175 ET

**DCR 87 DCR 8175 INTERNATIONAL 2205**  
BW: 82 WW: 735 YW: 1200  
3/17/2022 PAP: 36 Dams Age: 3 REG #: 44394450

DCR 713 International 301  
DCR 301 International 8175 ET  
THM TLS Lacey Lou 8763

DCR 200Z Precedence 518 ET  
DCR DVB 518 Gladys 9457  
DCR DVB 199B Gladys 7022

DCR Koot 713  
DCR 7006 Ella 9014  
Star 8006 Enyeto 163M ET  
THM TL'S Lacey 3057 ET

Churchill Red Bull 200Z  
Red Hills Keri T85  
NJW 78P 88X Cowboss 199B ET  
DCR 713 Gladys 4007

**CED BW WW YW SC MILK M&G FAT REA MARB BMI BII CHB**  
-4.6 5.2 54 92 1.5 26 53 -0.009 0.36 -0.03 \$329 \$389 \$109  
Horned



**DCR 88 DCR 8175 INTERNATIONAL 2206**  
BW: 71 WW: 716 YW: 1160  
3/20/2022 PAP: 36 Dams Age: 3 REG #: 44394451

DCR 713 International 301  
DCR 301 International 8175 ET  
THM TLS Lacey Lou 8763

DCR 200Z Precedence 518 ET  
DCR DVB 518 Chablis 9412  
DCR 135 Chablis 4077

DCR Koot 713  
DCR 7006 Ella 9014  
Star 8006 Enyeto 163M ET  
THM TL'S Lacey 3057 ET

Churchill Red Bull 200Z  
Red Hills Keri T85  
DCR 713 Kootenay 135  
Red Hills Miss Chablis S273

**CED BW WW YW SC MILK M&G FAT REA MARB BMI BII CHB**  
-1.3 3.6 47 82 1.4 22 46 0.001 0.3 0 \$350 \$407 \$107



**DCR 89 DCR 8175 INTERNATIONAL 2219**  
BW: 85 WW: 638 YW: 1110  
3/27/2022 PAP: 39 Dams Age: 3 REG #: 44517180

DCR 713 International 301  
DCR 301 International 8175 ET  
THM TLS Lacey Lou 8763

DCR 428B Manhattan 6009  
DCR 6009 Sharon 9103  
DCR 320 Sharon 7387 ET

DCR Koot 713  
DCR 7006 Ella 9014  
Star 8006 Enyeto 163M ET  
THM TL'S Lacey 3057 ET

Churchill Manhattan 428B  
DCR 38Y Ella C 4085  
DCR 100W Trusted 320 ET  
DCR Sharon 3047

**CED BW WW YW SC MILK M&G FAT REA MARB BMI BII CHB**  
-0.6 3.5 59 92 1.5 26 55 0.016 0.41 0.06 \$338 \$409 \$111





**DCR 8175 INTERNATIONAL 2223**  
**90** BW: 86 WW: 664 YW: 1130  
 3/28/2022 PAP: 39 Dams Age: 3 REG #: 44394491

DCR 713 International 301  
**DCR 301 International 8175 ET**  
 THM TLS Lacey Lou 8763

Churchill Manhattan 428B ET  
**DCR 428B Daisy 9053**  
 DCR 199B Daisey 6300

DCR Koot 713  
 DCR 7006 Ella 9014  
 Star 8006 Enyeto 163M ET  
 THM TL'S Lacey 3057 ET

Churchill Sensation 028X  
 Churchill Lady 002X ET  
 NJW 78P 88X Cowboss 199B ET  
 DCR 3232 Daisey 9031



**CED BW WW YW SC MILK M&G FAT REA MARB BMI BII CHB**  
 -5.1 5.2 57 94 1.4 25 54 0.021 0.39 -0.04 \$346 \$410 \$102

**DCR 8175 INTERNATIONAL 2238**  
**93** BW: 75 WW: 614 YW: 1100  
 3/31/2022 PAP: 37 Dams Age: 3 REG #: 44394604

DCR 713 International 301  
**DCR 301 International 8175 ET**  
 THM TLS Lacey Lou 8763

Hills-Galore 44Z Resolute 128D  
**DCR 128D Ella 9334**  
 DCR 136X Ella 3046

DCR Koot 713  
 DCR 7006 Ella 9014  
 Star 8006 Enyeto 163M ET  
 THM TL'S Lacey 3057 ET

RST X51 Revolution 4102  
 Hills-Galore 52R Calli 44Z  
 NJW 12E Duration 136X ET  
 DCR 0302 Ella 8030



**CED BW WW YW SC MILK M&G FAT REA MARB BMI BII CHB**  
 -1.7 3.8 52 91 1.3 21 47 0.021 0.44 0.01 \$332 \$394 \$109



**DCR 8175 INTERNATIONAL 2226**  
**91** BW: 75 WW: 500 YW: 1140  
 3/28/2022 PAP: Dams Age: 3 REG #: 44394494

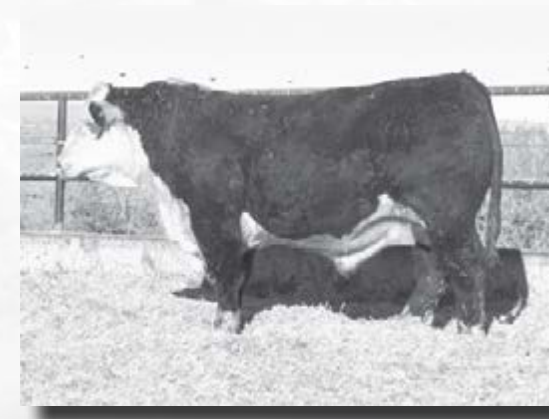
DCR 713 International 301  
**DCR 301 International 8175 ET**  
 THM TLS Lacey Lou 8763

DCR 48B Babe Ruth 6055  
**DCR 6055 Ella 9234 ET**  
 DCR 722 Ella C 0119

DCR Koot 713  
 DCR 7006 Ella 9014  
 Star 8006 Enyeto 163M ET  
 THM TL'S Lacey 3057 ET

BAR-RZ 980 Babe Ruth 48B  
 DCR 38T Standard 022  
 DCR Koot 722  
 DCR 3232 Ella C 7026T

**CED BW WW YW SC MILK M&G FAT REA MARB BMI BII CHB**  
 -2.1 4.2 54 85 1.2 22 49 0.001 0.52 -0.01 \$308 \$368 \$114



**DCR 8175 INTERNATIONAL 2242**  
**94** BW: 90 WW: 680 YW: 1360  
 3/31/2022 PAP: 36 Dams Age: 3 REG #: 44394611

DCR 713 International 301  
**DCR 301 International 8175 ET**  
 THM TLS Lacey Lou 8763

NJW 78P 88X Cowboss 199B  
**DCR 199B Lauretta 9226 ET**  
 DCR 3281 Lauretta 623

DCR Koot 713  
 DCR 7006 Ella 9014  
 Star 8006 Enyeto 163M ET  
 THM TL'S Lacey 3057 ET

NJW 98S R117 Ribeye 88X ET  
 NJW BW Ladysport Dew 78P ET  
 WNH Keynote 9401  
 DH Lauretta Bell 281

**CED BW WW YW SC MILK M&G FAT REA MARB BMI BII CHB**  
 -6.6 6.6 57 95 1.3 25 54 -0.009 0.38 -0.11 \$335 \$393 \$100

**DCR 8175 INTERNATIONAL 2232**  
**92** BW: 95 WW: 630 YW: 1150  
 3/31/2022 PAP: 39 Dams Age: 3 REG #: 44394596

DCR 713 International 301  
**DCR 301 International 8175 ET**  
 THM TLS Lacey Lou 8763

DCR 100W Trusted 320 ET  
**DCR 320 Dominet 9331**  
 DCR 713 Dominet 0101

DCR Koot 713  
 DCR 7006 Ella 9014  
 Star 8006 Enyeto 163M ET  
 THM TL'S Lacey 3057 ET

NJW 73S M326 Trust 100W ET  
 DCR Diana 7020  
 DCR Koot 713  
 DCR Dominet 0018



**CED BW WW YW SC MILK M&G FAT REA MARB BMI BII CHB**  
 -7.8 6.8 55 92 1.2 20 48 0.001 0.32 -0.08 \$343 \$403 \$97

**DCR 8175 INTERNATIONAL 2257**  
**95** BW: 75 WW: 725 YW: 1210  
 4/3/2022 PAP: 39 Dams Age: 3 REG #: 44419765

DCR 713 International 301  
**DCR 301 International 8175 ET**  
 THM TLS Lacey Lou 8763

DCR 428B Manhattan 6009  
**DCR Winnie 9498**  
 DCR Y509 Wine 7044

DCR Koot 713  
 DCR 7006 Ella 9014  
 Star 8006 Enyeto 163M ET  
 THM TL'S Lacey 3057 ET

Churchill Manhattan 428B  
 DCR 38Y Ella C 4085  
 GRNDVIEW CMR156T VisionY 509 ET  
 DCR 05X Wine 2009



**CED BW WW YW SC MILK M&G FAT REA MARB BMI BII CHB**  
 -2.2 3.9 59 93 1.5 24 54 0.021 0.4 0.1 \$334 \$405 \$112

**DCR 8175 INTERNATIONAL 2298**  
**96** BW: 68 WW: 760 YW: 1250  
 4/7/2022 PAP: 39 Dams Age: 3 REG #: 44394716

DCR 713 International 301  
**DCR 301 International 8175 ET**  
 THM TLS Lacey Lou 8763

NJW 78P 88X Cowboss 199B  
**DCR Miss Daisy 9359**  
 DCR 713 Miss Daisy 2036

DCR Koot 713  
 DCR 7006 Ella 9014  
 Star 8006 Enyeto 163M ET  
 THM TL'S Lacey 3057 ET

NJW 98S R117 Ribeye 88X ET  
 NJW BW Ladysport Dew 78P ET  
 DCR Koot 713  
 DCR 328 Miss Daisy 4025A



**CED BW WW YW SC MILK M&G FAT REA MARB BMI BII CHB**  
 0 2.5 51 86 1.4 27 53 0.011 0.48 -0.02 \$325 \$383 \$107

**DCR 8175 INTERNATIONAL 2335**  
**99** BW: 67 WW: 630 YW: 1235  
 4/9/2022 PAP: 37 Dams Age: 3 REG #: 44394878

DCR 713 International 301  
**DCR 301 International 8175 ET**  
 THM TLS Lacey Lou 8763

DCR 200Z Precedence 518 ET  
**DCR DVB 518 Tara 9430**  
 DCR 38Y Tara 5083

DCR Koot 713  
 DCR 7006 Ella 9014  
 Star 8006 Enyeto 163M ET  
 THM TL'S Lacey 3057 ET

Churchill Red Bull 200Z  
 Red Hills Keri T85  
 BP 44U Anchor 38Y  
 DCR 713 Tara 3008



**CED BW WW YW SC MILK M&G FAT REA MARB BMI BII CHB**  
 1.4 3 48 82 1.4 23 47 0.011 0.31 0.04 \$343 \$404 \$110



**DCR 8175 INTERNATIONAL 2321**  
**97** BW: 62 WW: 616 YW: 1200  
 4/8/2022 PAP: 38 Dams Age: 3 REG #: 44394738

DCR 713 International 301  
**DCR 301 International 8175 ET**  
 THM TLS Lacey Lou 8763

NJW 78P 88X Cowboss 199B  
**DCR 199B Diana 9269**  
 DCR 312 Diana 6005

DCR Koot 713  
 DCR 7006 Ella 9014  
 Star 8006 Enyeto 163M ET  
 THM TL'S Lacey 3057 ET

NJW 98S R117 Ribeye 88X ET  
 NJW BW Ladysport Dew 78P ET  
 DCR 713 Iconic 312  
 DCR HD 38T Diana 200Z

**CED BW WW YW SC MILK M&G FAT REA MARB BMI BII CHB**  
 1.3 2.5 50 82 1.4 25 50 0.011 0.4 0.02 \$308 \$366 \$108



**DCR 8175 INTERNATIONAL 2352**  
**100** BW: 70 WW: 655 YW: 1185  
 4/11/2022 PAP: 36 Dams Age: 3 REG #: 44394907

DCR 713 International 301  
**DCR 301 International 8175 ET**  
 THM TLS Lacey Lou 8763

DCR 428B Manhattan 6009  
**DCR 6009 Polly 9130**  
 DCR 301 Polly 7027

DCR Koot 713  
 DCR 7006 Ella 9014  
 Star 8006 Enyeto 163M ET  
 THM TL'S Lacey 3057 ET

Churchill Manhattan 428B  
 DR 38Y Ella C 4085  
 DCR 713 International 301  
 DCR Polly 3053

**CED BW WW YW SC MILK M&G FAT REA MARB BMI BII CHB**  
 0.5 3.5 60 91 1.5 25 56 0.021 0.46 0.05 \$320 \$391 \$112

**DCR 8175 INTERNATIONAL 2334**  
**98** BW: 68 WW: 630 YW: 1225  
 4/9/2022 PAP: 37 Dams Age: 3 REG #: 44394877

DCR 713 International 301  
**DCR 301 International 8175 ET**  
 THM TLS Lacey Lou 8763

DCR 199B Cowboss 6072  
**DCR DVB 6072 Ella 9407**  
 DCR 106 Ella 4028

DCR Koot 713  
 DCR 7006 Ella 9014  
 Star 8006 Enyeto 163M ET  
 THM TL'S Lacey 3057 ET

NJW 78P 88X Cowboss 199B  
 Red Hills Keri T85  
 DCR 7006 Equity 106  
 DCR 38T Ella C 011



**CED BW WW YW SC MILK M&G FAT REA MARB BMI BII CHB**  
 -0.9 3.6 50 83 1.5 22 47 -0.009 0.32 -0.02 \$316 \$372 \$105

**DCR 8175 INTERNATIONAL 2356**  
**101** BW: 75 WW: 650 YW: 1090  
 4/11/2022 PAP: 39 Dams Age: 3 REG #: 44492638

DCR 713 International 301  
**DCR 301 International 8175 ET**  
 THM TLS Lacey Lou 8763

BAR-RZ 56X Cassius Clay 83C  
**DCR 83C Miss Kootenay 9132**  
 BP 115C Miss Kootenay 6E

DCR Koot 713  
 DCR 7006 Ella 9014  
 Star 8006 Enyeto 163M ET  
 THM TL'S Lacey 3057 ET

BAR-RZ 85U Rolex 56X  
 BAR-RZ 192S Western Star 7W  
 BP 247 Kootenay 115C  
 BP 23A Miss Cracker Jack 99C



**CED BW WW YW SC MILK M&G FAT REA MARB BMI BII CHB**  
 -1.5 4.2 50 89 1.4 21 46 0.031 0.37 0.02 \$347 \$408 \$111

**DCR 8175 INTERNATIONAL 2360**

102 BW: 75 WW: 564 YW: 1080  
4/11/2022 PAP: 39 Dams Age: 3 REG #: 44402124

DCR 713 International 301  
DCR 301 International 8175 ET  
THM TLS Lacey Lou 8763

DCR Koot 713  
DCR 7006 Ella 9014  
Star 8006 Enyeto 163M ET  
THM TL'S Lacey 3057 ET

BAR-RZ 56X Cassius Clay 83C  
DCR 83C Miss Kootenay 9160  
BP 247 Miss Kootenay 121E

BAR-RZ 85U Rolex 56X  
BAR-RZ 192S Western Star 7W  
DCR 713 Kootenay 247  
BP 265Y Stanmore Lady 180A

CED BW WW YW SC MILK M&G FAT REA MARB BMI BII CHB  
2.3 4.2 49 89 1.4 22 47 0.021 0.36 0.01 \$352 \$412 \$110



**DCR 8175 INTERNATIONAL 2504**

105 BW: 74 WW: 560 YW: 1195  
5/9/2022 PAP: 37 Dams Age: 3 REG #: 44395378

DCR 713 International 301  
DCR 301 International 8175 ET  
THM TLS Lacey Lou 8763

DCR Koot 713  
DCR 7006 Ella 9014  
Star 8006 Enyeto 163M ET  
THM TL'S Lacey 3057 ET

NJW 78P 88X Cowboss 199B  
DCR 199B Vicki 9260  
DCR 48B Babe Ruth 6205

NJW 98S R117 Ribeye 88X ET  
NJW BW Ladysport Dew 78P ET  
BAR-RZ 980 Babe Ruth 48B  
DCR 44X Vicki 3084

CED BW WW YW SC MILK M&G FAT REA MARB BMI BII CHB  
-2.5 4.2 53 88 1.4 25 52 0.001 0.43 -0.02 \$314 \$373 \$107



**DCR 8175 INTERNATIONAL 2450**

103 BW: 80 WW: 616 YW: 1145  
4/25/2022 PAP: 37 Dams Age: 3 REG #: 44395334

DCR 713 International 301  
DCR 301 International 8175 ET  
THM TLS Lacey Lou 8763

DCR Koot 713  
DCR 7006 Ella 9014  
Star 8006 Enyeto 163M ET  
THM TL'S Lacey 3057 ET

DCR 136X Dependable 376  
DCR 376 Ella 9308 ET  
DCR 199B Ella 6358 ET

NJW 12E 4037 Duration 136X ET  
DCR 7006 Miss Daisy 9037  
NJW 78P 88X Cowboss 199B ET  
DCR 722 Ella C 0119

CED BW WW YW SC MILK M&G FAT REA MARB BMI BII CHB  
-3.9 4.3 51 83 1.2 26 52 0.011 0.36 0 \$344 \$405 \$106



**DCR 8175 INTERNATIONAL 2507**

106 BW: 65 WW: 620 YW: 1035  
5/9/2022 PAP: 38 Dams Age: 3 REG #: 44503038

DCR 713 International 301  
DCR 301 International 8175 ET  
THM TLS Lacey Lou 8763

DCR Koot 713  
DCR 7006 Ella 9014  
Star 8006 Enyeto 163M ET  
THM TL'S Lacey 3057 ET

BAR-RZ 56X Cassius Clay 83C  
DCR 83C Miss Cal 9488  
BP 10B Miss Cal 4E

BAR-RZ 85U Rolex 56X  
BAR-RZ 192S Western Star 7W  
Hills-Galore 36T 605 Easy 10B  
BP 38T Standard Lady 51C

CED BW WW YW SC MILK M&G FAT REA MARB BMI BII CHB  
2 2.7 47 81 1.3 23 46 0.021 0.35 -0.01 \$379 \$436 \$107



**DCR 8175 INTERNATIONAL 2500**

104 BW: 80 WW: 590 YW: 1060  
5/6/2022 PAP: 38 Dams Age: 4 REG #: 44514857

DCR 713 International 301  
DCR 301 International 8175 ET  
THM TLS Lacey Lou 8763

DCR Koot 713  
DCR 7006 Ella 9014  
Star 8006 Enyeto 163M ET  
THM TL'S Lacey 3057 ET

DCR 199B Cowboss 6072  
DCR DVB Tara 9436  
DCR HD Tara 5204

NJW 78P 88X Cowboss 199B  
Red Hills Keri T85  
DCR 136X Dependable 376  
DCR 722 Tara 128X

CED BW WW YW SC MILK M&G FAT REA MARB BMI BII CHB  
-3 4.3 53 89 1.4 25 51 0.001 0.4 -0.03 \$340 \$400 \$108



# 300 Head of High Altitude, F1 Baldy Heifer Calves Sired by DCR Bulls

- Heifers will be penned in groups of 25
- Selling in groups of 5 with a run on the pen if desired.

Consigned by  
2K Cattle Company  
McNeel Ranch  
Jeff Zdziarski

## Why the Baldy Advantage

- ◆ A 7% advantage in conception rate
- ◆ 51% more per cow per year
- ◆ Improve disposition & handling ability
- ◆ Increase value of females
- ◆ Data based on the Circle A Ranch Heterosis Project beginning in 2007, conducted by Circle A Angus Ranch.

For questions about the heifers, please contact Bruce at (307) 867-2402 or (307) 921-3021.



**DCR**  
**108**

AP Frosty Knight  
Gila Drift  
Tuf Susy Hancock  
DCR Frosty Cash  
2015 Buckskin Mare  
DKM Kusterwood  
DCR Dandywood  
DCR Dandys Roan

Sun Frost  
AP Night  
Guatemala Canal  
Dry Fork Ada  
Ciderwood  
Sarca Katy  
Roan for Cash  
Dandy Dollita



“Susie” is a 7 year old mare we raised and a full sister to Taylors barrel horse, Charlie. She has had all aspects of ranch work and feedlot work done on her. Started out of the box well and has been used at Little Britches Rodeos. She is very gentle. Would make a great family all around horse.  
Guaranteed 100% sound.

**DCR**  
**109**



Doc's Jacks Frost  
Sun Frost  
Docs Gringo Frost  
Docs Super Missy  
Snookis Bar Dancer  
2012 Bucksin Mare  
Max Blue Bojangles  
Bojangles Dancer  
Ivy Dancer

Prissy Cline  
Docs Super Cross  
Platero Missy  
Maximum  
Squirrely Blue  
Ivory Dancer  
Blossom Jet

Cardi is a 12 year old mare offered by our head pen rider, Levi Klemm. She has done all aspects of ranch and feedlot work. Is started out of the box and ready to go to the next level.  
Guaranteed 100% sound.



# Washakie Feeders

805 HWY 16 E  
Worland, Wy 82401

**A division of Durbin Creek Ranch  
Owned and Operated by the Agar Family**

Washakie Feeders is a family-owned division of Durbin Creek Ranch. The Agar family operate and work daily at the feedlot. We hire the best pen riding and feed crews available in central Wyoming. Come by and meet the crew and see if we can help you with your future needs!

- Calf Marketing - Simply let us know when and where your calves are selling, if they are sired by Durbin Creek Ranch bulls, we will be there with our buyers group. If not, let us broker a deal for you.
- Back grounding and retained ownership - Put Washakie Feeders to work for you, by backgrounding your calves. We can put them on our show list to be in front of buyers or help arrange finishing options with the finishing lots we work with.
- Heifer development - Let us develop your high-quality females and either prepare them to return to your ranch to be productive cows or market them in an extremely hot baldy female market.

\* If you are in the area, take advantage of the Washakie Feeders Truck Washout located on the hill above the feedlot.

## Livestock Transportation Services

**Durbin Creek Ranch can help in all your cattle hauling needs.  
We can haul cattle throughout the Western states.**

Contact Bruce Agar for a quote.

Home: (307) 867-2402

Cell: (307) 921-3021



### ROPE!



DCR Cash For Lilly (Charlie)-Gila Drift X DCR Dandywood X TKM Kusterwood



DCR Frosted Red Rose (Fancy)-PC Wades Frost X Moons Red Rose X Kellys Golden Moon

### RUN!

### RANCH!



DCR Bay Star (Bear)-LZM Brown Conchos X Bessys Best Gold X Goldchainingmaker



DCR Frosted Angle (Beauty)- Gila Drift X DCR Angle Wood X LZM Brown Conchos

### REAL!



James Arviso  
&  
"Rihanna"  
DCR Sunny Reed



2021 Gold Buckle Beer Open 2nd Place  
2022 National High School Rodeo Finals Heading Champions  
2022 World Series American Rodeo Open 2nd Place  
\$200,000+ Heading Earnings

Lot 108 DCR Frosty Cash (Susie)-Gila Drift X DCR Dandywood X TKM Kusterwood

[www.durbincreekranch.com](http://www.durbincreekranch.com)

# Thank You For 11 Years Of Success!!

# The Cows Behind the Program!



We would like to give out a big "Thank you" to all of the employees of Durbin Creek Ranch and Washakie Feeders. You make this sale possible, we couldn't do it without you.



DCR 199B Lacey Lou 0001



DCR 128D Dominet 9209 ET



DCR 199B Leslie 7064



DCR 6009 Dom 9164



DCR 479 Miss Cal 0149



DCR 376 Ella 9206 ET



Dana DCR199B Ontime 8166 ET



DCR 518 Ella 8639



DCR 376 Ella 9205 ET



DCR A2 8327 Ontime 1150



DCR 7167 Diana 9230 ET



DCR 428B Standard Lady 9623

Born In Wyoming!  
Changing the Breed!

Durbin Creek Ranch  
3292 Grass Creek Rd  
Thermopolis, WY 82443

BULK RATE  
U.S. POSTAGE  
PAID  
PERMIT NO. 57  
THERMOPOLIS, WY  
82443

Thank you for your interest in the  
Durbin Creek Program. We look forward to  
seeing you next year.

